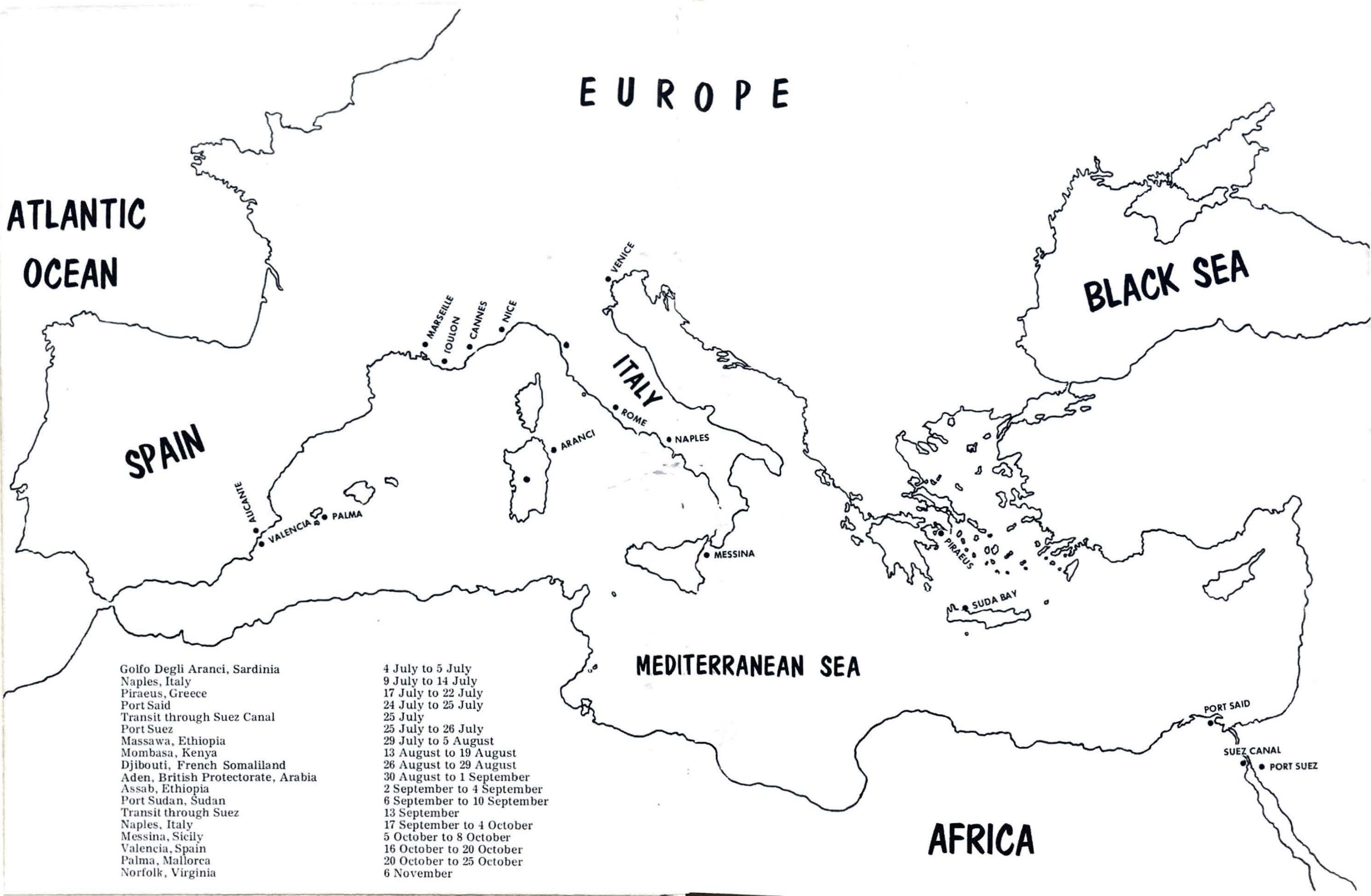




**USS LAFFEY DD-724
MEDITERRANEAN SEA
AND
MIDDLE EAST
1965**



EUROPE

ATLANTIC OCEAN

BLACK SEA

SPAIN

ITALY

MEDITERRANEAN SEA

AFRICA

Golfo Degli Aranci, Sardinia
 Naples, Italy
 Piraeus, Greece
 Port Said
 Transit through Suez Canal
 Port Suez
 Massawa, Ethiopia
 Mombasa, Kenya
 Djibouti, French Somaliland
 Aden, British Protectorate, Arabia
 Assab, Ethiopia
 Port Sudan, Sudan
 Transit through Suez
 Naples, Italy
 Messina, Sicily
 Valencia, Spain
 Palma, Mallorca
 Norfolk, Virginia

4 July to 5 July
 9 July to 14 July
 17 July to 22 July
 24 July to 25 July
 25 July
 25 July to 26 July
 29 July to 5 August
 13 August to 19 August
 26 August to 29 August
 30 August to 1 September
 2 September to 4 September
 6 September to 10 September
 13 September
 17 September to 4 October
 5 October to 8 October
 16 October to 20 October
 20 October to 25 October
 6 November

ALCANTA

VALENCIA PALMA

MARSEILLE
 TOULON
 CANNES
 NICE

ARANCI

VENICE

ROME

NAPLES

MESSINA

SUDA BAY

PIRAEUS

PORT SAID

SUEZ CANAL

PORT SUEZ



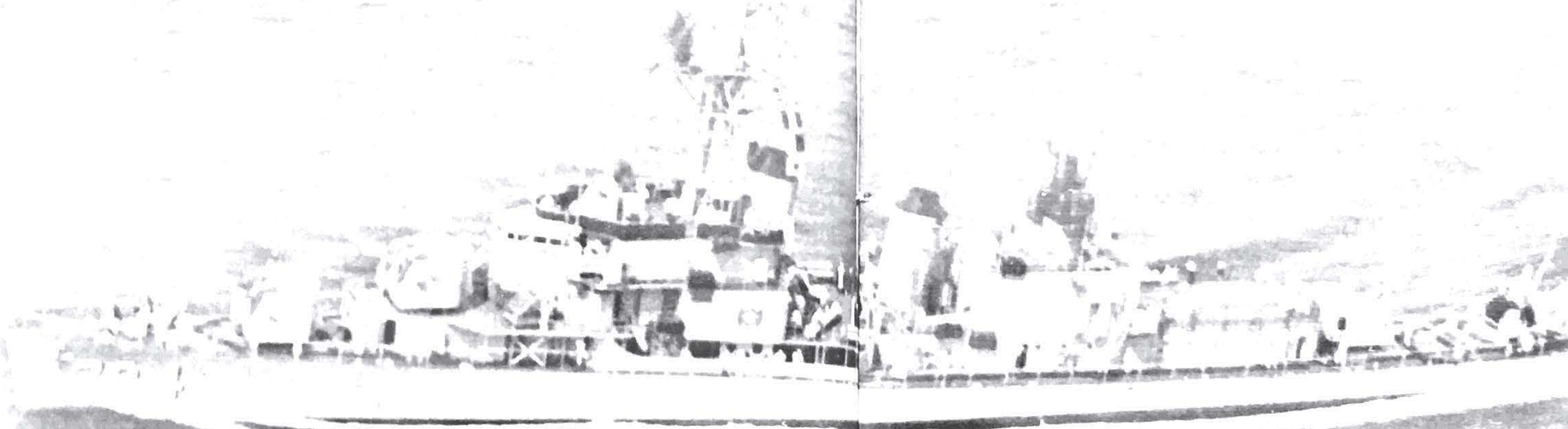
This book was created by and for Laffeymen. Its purpose is to record some of the pleasant memories of our 1965 Mediterranean - Middle East cruise. As we leaf through these pages we shall see photographs of our shipmates, the places we visited and some of the interesting events in which we all participated. In future years it will help to trigger our memories of a very successful cruise.

To those readers who were not Laffeymen during this cruise, a preface is in order. There is one thing which has not been captured in this book. Only those of you who have gone to sea in destroyers will understand. It can not be shown in words or pictures. This is the distinction of being a destroyer sailor. The Laffeymen pictured in this book, as their fellow destroyermen pictured in this book, are a proud breed. Their ship is slim, sleek and fast. Their jobs are complex, and their work is demanding. The men of Laffey worked as a team, yet they maintained their individuality. They created a living warship in which they were the heart, the blood and the sinew. It is their stamina, their devotion to duty, their individual effort and sacrifice, which can not be shown here.

It was my privilege to be in command of Laffey during the cruise. My pride in the accomplishments of this hardworking, close knit band of shipmates is unbounded. I would like to dedicate this book to the Laffeymen who took this ship to sea and to those who awaited their return.

Very sincerely,

N. L. KAUFMAN
Commander, U. S. Navy
Commanding Officer



The USS LAFFEY (DD-724) is the second ship of the fleet to bear this name. The first LAFFEY (DD-459) was sunk during the engagement with two Japanese cruisers and six destroyers in 1942. A Presidential Citation from the War Department was awarded to the first LAFFEY for her gallant defense.

LAFFEY (DD-724) was commissioned on 8 February, 1944, and was assigned to combat duty in the North Atlantic during the month of 6 June, 1944. LAFFEY was off the beaches at Normandy during the invasion and provided support. As LAFFEY departed the assault area on 10 June, the following message was received from the beach: "We'll call on you again a few days, another opportunity to plaster them." LAFFEY concluded her operations in the European Theater with the bombardment of the Cherbourg defenses, and received her first hit on 28 May and lived from a German pillbox.

After escorting a convoy back to the United States, LAFFEY was outfitted with new equipment, a new crew, and a new ocean route through the Panama Canal.

LAFFEY arrived at Ulithi on 22 November, after serving as a convoy escort from Pearl Harbor. From Ulithi, with other units of Destroyer Squadron 60, LAFFEY departed for the Leyte Gulf as screening and gunfire support ship. LAFFEY participated in landing troops on Mindoro, and patrolled in that area during December.

Early in January, 1945, LAFFEY was in the Lingayen Gulf. After being released from the invasion group there, LAFFEY acted as a screening ship for Task Force 58 which was making air strikes against the Japanese homeland and softening up Iwo Jima.

LAFFEY arrived off Okinawa on 24 March, and with other units of Task Group 54, assisted in the capture of Kerama Retto.

On 13 April, LAFFEY was directed to Radar Picket Station Number One, thirty miles north of Okinawa. While on station 16 April 1945, LAFFEY was attacked by twenty-two aircraft within 79 minutes. Between 0837 and 0946, LAFFEY shot down nine enemy aircraft, was hit by eight suicide planes five of which carried bombs; four conventional bombs, and an American F4U Corsair. In the hour

of the battle, while personnel casualties were mounting to 103 the Commanding Officer sent the following message: "I will not abandon ship while a gun will fire". Six days later, LAFFEY turned East, and in view of enemy escort, her remaining guns ready to fire. LAFFEY entered the yards for repairs, before she could return to battle, the Japanese surrendered. LAFFEY was awarded the Presidential Unit Citation.

The type Commander, in August 1963, declared LAFFEY the winner of the Battle Efficiency Competition. LAFFEY won the "E" for being the most battle-ready ship in Destroyer Squadron 32. She also won the Weapons "E", and has individual awards to each gun mount for outstanding competitive shooting.

LAFFEY was transferred to Destroyer Squadron 36 in January, 1963, and became the flagship of her new squadron. LAFFEY ceased Task Group ALFA operations in May to begin preparing for a Midshipman Training Cruise to the Mediterranean. June 12, LAFFEY departed Norfolk, and joined ASW Task Group FOUR enroute to the Med. During the cruise, LAFFEY demonstrated her readiness again and again in ASW and in her fast replenishment rates.

After returning to Norfolk in September, LAFFEY's football and basketball teams won the Squadron, Flotilla, Area, and type Commander's championships.

January 1965, LAFFEY entered Norfolk Naval Shipyard for overhaul. The yard period was completed in April, and after a few days of trials, LAFFEY departed for Refresher Training at Guantanamo Bay, Cuba. Returning from Refresher Training in late May, the ship prepared for another overseas deployment to the Mediterranean Sea and Middle East. June 1965 LAFFEY sailed for the Mediterranean as part of Destroyer Squadron 36. In August, the type commander awarded LAFFEY the Battle Efficiency "E" for the third consecutive year and also the Engineering Department "E".

The operational readiness of LAFFEY has been tested again and again, under the most trying conditions, in every major campaign since she joined the fleet over twenty-one years ago. And she stands ready to serve again whenever and wherever the nation's need should arise.

CDR N. L. KAUFMAN

Commanding Officer

Commander Norman L. KAUFMAN, USN, a native of New York City, graduated from the United States Merchant Marine Academy, Kings Point, New York in 1948. Following his graduation he served as a Ship's Officer in the U.S. Army Transport GENERAL EDWIN D. PATRICK until the latter part of 1949.

From January 1950 until June 1951 he was attached to USS LSM 398 of the Atlantic Fleet Amphibious Force. His duties included Operations Officer, First Lieutenant, and Navigator.

After an extensive period of duty under instruction at the Submarine School, New London, Connecticut and the Deep Sea Diving School, Washington, D.C., CDR KAUFMAN reported to the submarine rescue ship USS KITTIWAKE where he served from June 1952 until October 1954 as Rescue and Salvage Officer, Operations Officer, Navigator and completed his tour as Executive Officer. His next tour of duty was with Cruiser-Destroyer Forces Pacific as Operations Officer and Navigator of USS BLUE (DD-744) which terminated in January 1957.

For the next ten months CDR KAUFMAN was a student in the General Line Curriculum at the Naval Postgraduate School, Monterey, California. After successfully completing the course, he reported to the U.S. Naval Base, Newport, Rhode Island and served as Officer-in-Charge, Service Craft with collateral duties as Engineer and Repair Officer.

Upon completion of his shore duty tour in January 1960 he was assigned temporary duty with Destroyer Squadron TWENTY-FOUR and served aboard USS McCAFFERY (DD-860) until assignment in May 1960 to USS HALE (DD-642) where he served as Executive Officer and then as Officer-in-Charge after HALE was selected for transfer to the Colombian Navy as part of the Military Assistance Program. In January 1961 HALE was commissioned as the Colombian Naval Destroyer "ANTIQUIA" and CDR KAUFMAN remained aboard as Officer-in-Charge of the U.S. Naval Mobile Training Team. In May 1961 he reported to USS CALCATERRA (DER-390) as Commanding Officer. Upon departing CALCATERRA in October 1962, CDR KAUFMAN reported to the Bureau of Naval Personnel for duty as Head, Mobilization Plans Section, Policy Division. He then attended the Armed Forces Staff College, Norfolk, Virginia from August 1964 to January 1965. CDR KAUFMAN was piped aboard LAFFEY 12 February 1965 as her Commanding Officer.

CDR KAUFMAN and Mrs. KAUFMAN, the former Edith Ceisler of Forest Hills, New York, have three children: Ruth J., Judith M., and David L.





Executive Officer

A. L. VAN HORNE

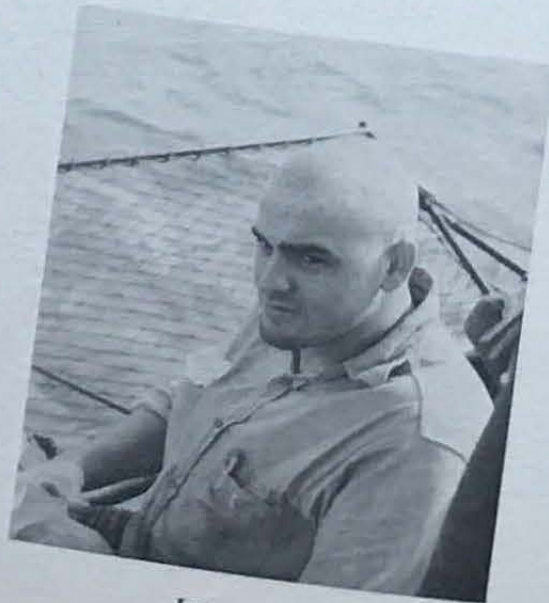
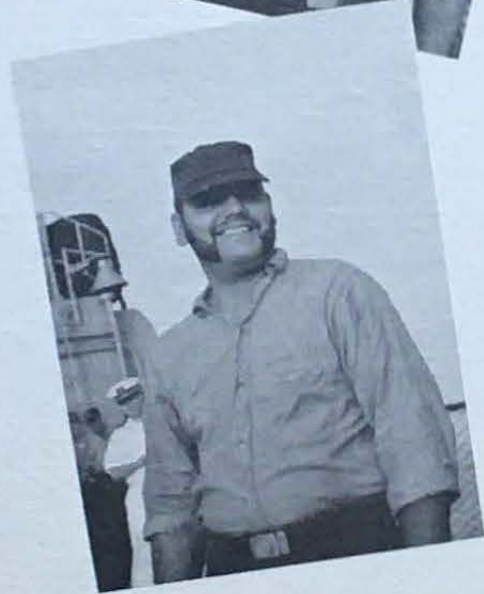
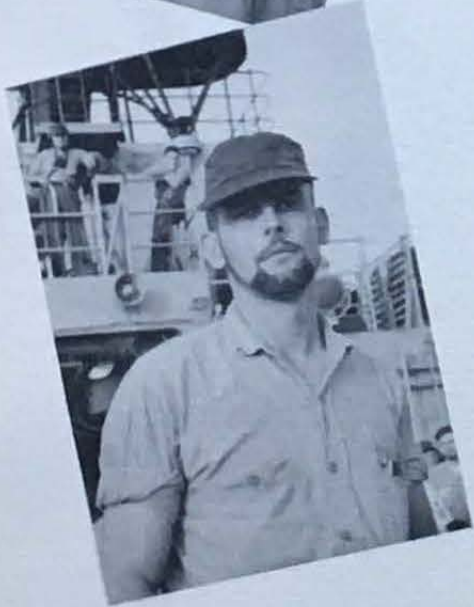
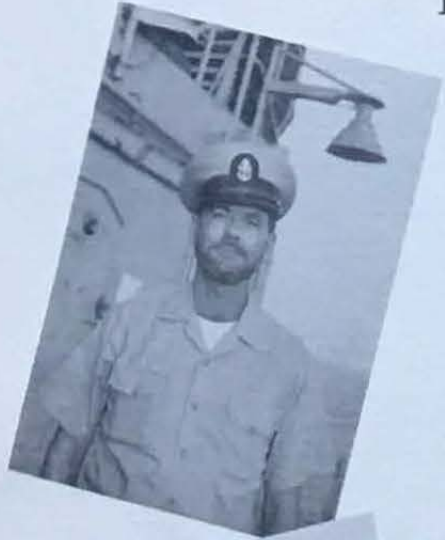
Lieutenant Commander USN

Lieutenant Commander Van Horne was commissioned upon graduation from the U.S. Naval Officers Candidate School, Newport, Rhode Island in 1956. His duties in the Navy include; 1945-1956, various aviation units as an aviation machinist mate; 1956-1958, USS VALLEY FORGE (CVS-45); 1958-1960, USS TURNER (DDR-834); 1960-1962, Instructor at the Fleet Anti-Air Warfare Training Center, Dam Neck, Virginia; 1962-1964, Staff Commander Destroyer Squadron Thirty-Two, and 1964-present USS LAFFEY (DD-724).





Beard Growing Contest



I am trying



W
E
A
P
O
N
S



LT J. M. BUCKETT, III
Weapons Officer



LTJG K. D. WALMA
2nd Division



LTJG D. K. ANDERSON
ASW Officer



LTJG C. M. HEATH
DASH Officer



LTJG K. G. KOERBER
First Lieutenant



ENS C. E. ZETTL
2nd Division



HILL, BM1



NELSON, BMSN



WILLIAMS, SN



LUCKETT, BM1



GRAVELY, SN



DONOHOE, SN



MELMS, BM1



RIVERA, SN



GARY, SN



DAILEY, BM3



COBB, SN



MOON, SN

1st Division



TURNER, SN



WIER, SA



HAYNES, SA



SMITH, SA



RHOADES, GMGC



SAUNDERS, GMG1



RUBIE, GMG1



DAVIS, GMG2



MERLIE, SA



DINKO, SA



BELHUMER, SA



TWYMAN, SN



CLARK, GMG2



KNOWLTON, GMG2



BENNINGTON, FTG2



AUGUST, FTG2



Glad to leave the Red Sea



Official Greeters



Casual, but ready



BUCK, FTG3



NEVES, FTG3



VIDLER, SN



STONE, FTGSN

2nd Division

3rd Division



BOSLEY, GMG3



HUFFMAN, GMG3



RUDLOFF, SN



TARRACH, YN3



JOHNSON, STC



SIMONE, ADJ1



CONNER, ATR2



TICE, ETR3



FINNEGAN, SN



PAWLEY, SN



FALVEY, FTG3



KENEFICK, TM3



McCULLOUGH, STG2



McKUNE, EN3



GILBERT, EN3



BUCH, SN



HOFFINGER, FTG3



MORRIS, SN



McCARTHY, SN



BORNEMANN, TM3



SIMMERMAN, ETRSN



PIPP, FTG3



STARK, FTGSN



REED, STGSN



WINDER, STGSN



HART, STG3



BUBB, STG3



KEATING, SN



SH Striker



DEETER, STGSN



EVANS, STGSN



Why can't I grow one too?
Maybe if we used invisible paint



What, me worry?

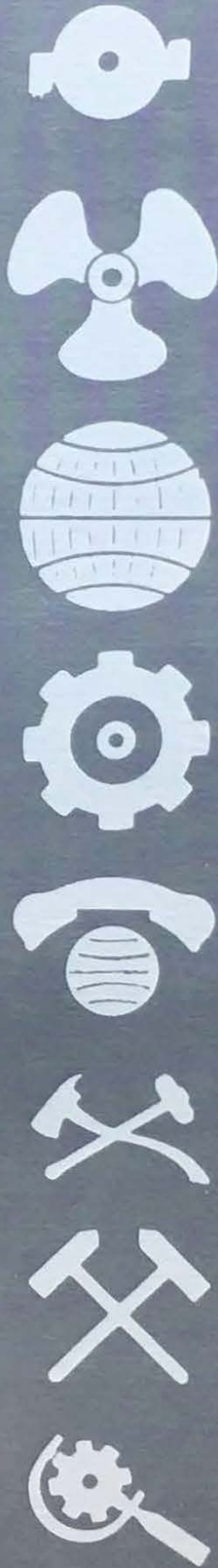


Happiness, the duty book and
a quiet watch.



N
A
D
J
O
S





**E
N
G
I
N
E
E
R
I
N
G**



LT W. H. GRAHAM
Engineer Officer



LTJG S. ZITIN
DCA



ENS P. R. BORCIK
MPA



ENS F. N. CHRISTOPHER
Assistant MPA



SABISKY, MMC



AGENT, MM2



BOWDEN, MM3



LEISTMAN, MM1



DIPALMA, MM3



WELTER, MM3



WOOD, MM2



BURNSIDE, MM3



SIMON, MM3



GILBERT, MMC



RAMSEY, MM2



CASSELLA, MM3



ROBERTS, FN



SPARKS, FA



SWEET, FN



FOSTER, FN



FARMER, BTC



ABRAMSON, BT2



BONGE, MM3



COOPER, FN



MAYNARD, FN



WINFREY, BT2



BROWN, BT1



BURCHAM, BT1



DUPREES, BT3



TATE, FA



WILLIAMS, MM3



THOMPSON, FA



TECK, FA



MARACICK, BT3



KUBIAK, BT2



HARDGRAVES, BT3



MARCHIANO, BT3



BINSEEL, FN



GRINNEL, FN



OLSON, FN



SITTER, BT3



THOMAS, BT3

B Division



LEIBHART, FN



OLIVER, FN



WILLIAMS, FA



KIRBY, FN



LEMIEUX, FN



WESOLOWSKI, FN



SPAIN, FN



WEDEL, FN



CASTILLO, BT3



LOMKER, BT3



Typical happy snipe



But I get claustrophobia



Only 100 more turns



BARTON, BT3



SHAHER, FN



TWINNING, FA



ION, FA



Fearless watch section



Now a little black smoke

Hello! Coffe shop?

R Division



UNDERWOOD, EM1



MONCRIEF, DC1



WHILES, EM1



ERICKSON, SF1



STRAND, EM3



SCHROEDER, EN3



MADISON, EM3



NEATHERY, EN3



MABRY, EM2



MOUSER, MR2



PALMER, IC2



OSMOND, EM2



CAMPBELL, EM3



COLLAZO, ICFN



CYPRIAN, FN



DAVIS, ENFN



WOLDROP, MM3



COLEMAN, EM3



STREGE, IC3



MORRIS, IC3



COLEMAN, FN



MARIANETTI, FN



BELSITO, FN



ROBERTS, ICFA



SPENCER, IC3



REES, SFP2



Whatdaya mean, all the lights went out?



The water works.



The load loser



It's in wrong.



Your friendly local power company.



A man on his way up in the Navy

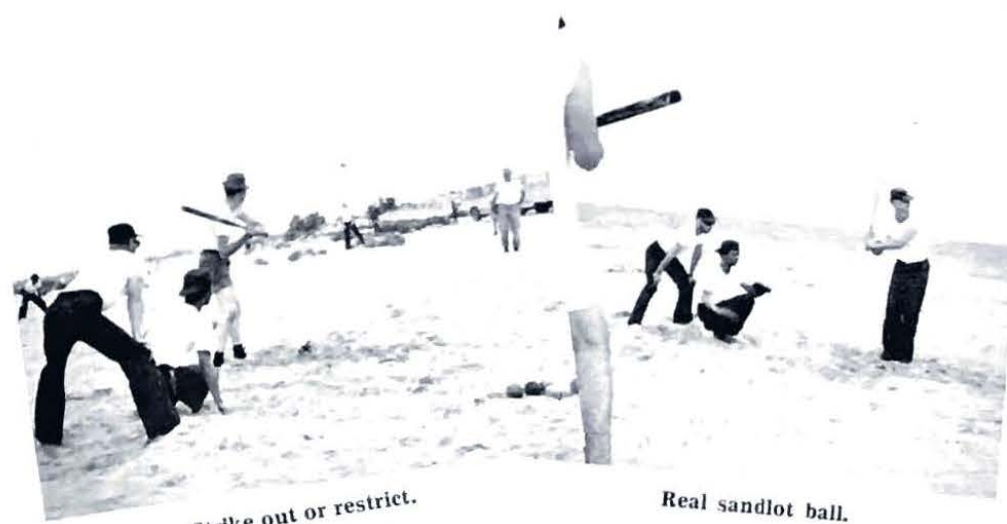


One ash tray coming up.



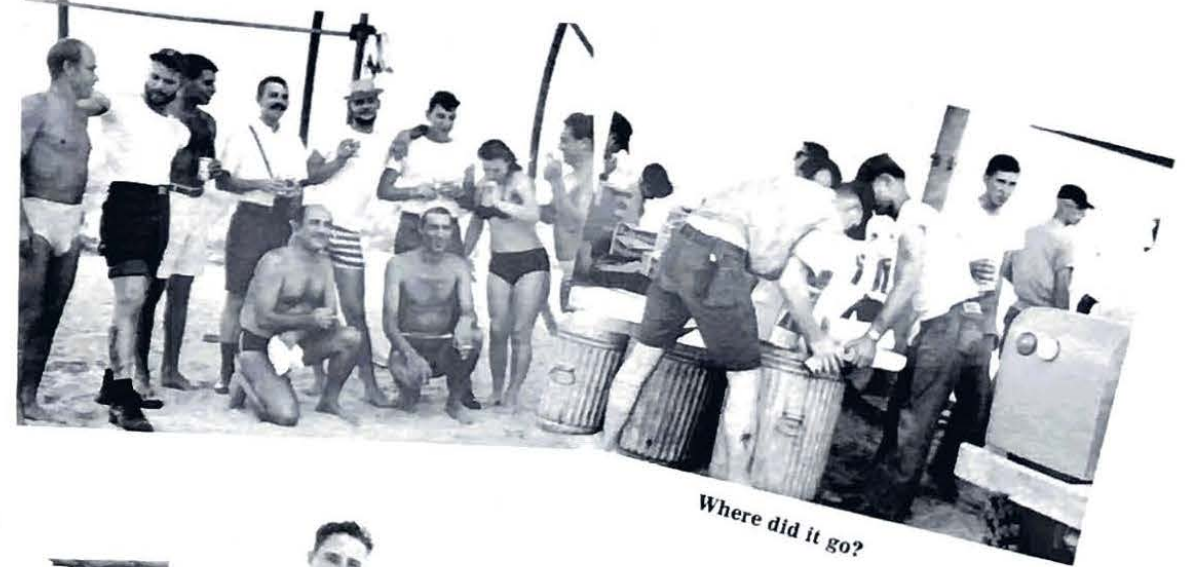
Stand-by world.

Beach Party



Strike out or restrict.

Real sandlot ball.



Did you bring her?

Where did it go?



No! APC'S!

War is HELL.



The social center of Ethiopia.

How many?



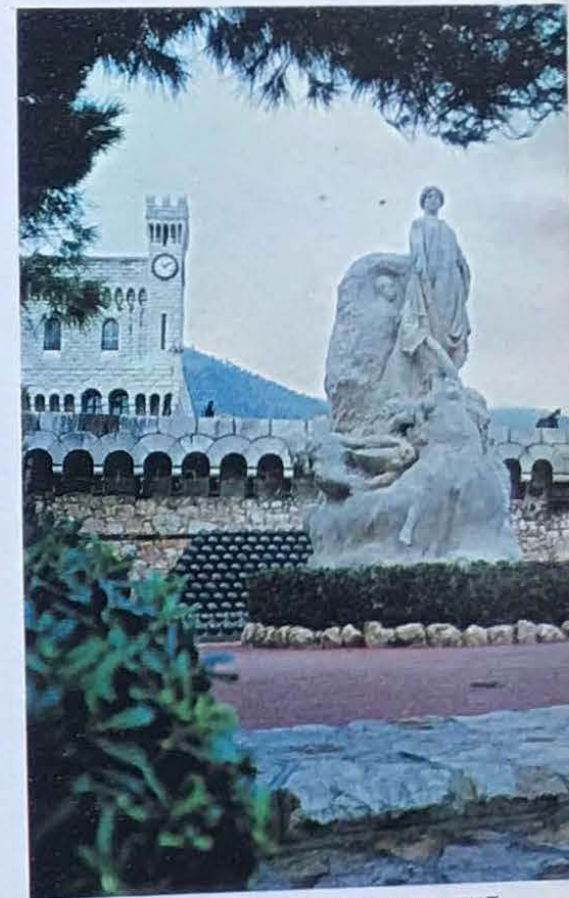
THE MEDITERRANEAN ITSELF HAS A REPUTATION OF HAVING THE MOST PRECIOUS SHADE OF BLUE. HER PORTS GLISTEN LIKE JEWELS IN THE SOUTHERN EUROPEAN SUN AND GLOW LIKE FIRE-FLIES AT NIGHT. WORDS ALONE ARE INADEQUATE TO DESCRIBE THE PLACES TO BE SEEN AND EVEN THE FOLLOWING COLOR SHOTS FALL SHORT TO TELL THE FULL STORY.



NO COMMENT!



CANNES HARBOR IS FULL OF SLEEPING YACHTS



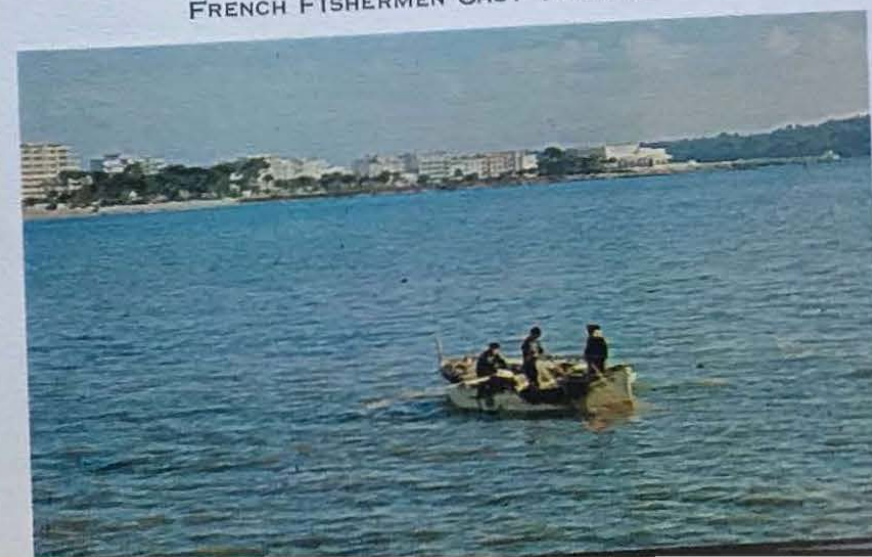
STATUE ON GROUNDS OF THE ROYAL PALACE OF MONACO



BEACHES ARE SOMETIMES EMPTY



BEAUTIFUL BEACHES



FRENCH FISHERMEN CAST THEIR NETS





MUSEUM AT ENTRANCE
TO ANCIENT POMPEII



THE FAMOUS ERECTHEUM ON THE ACROPOLIS



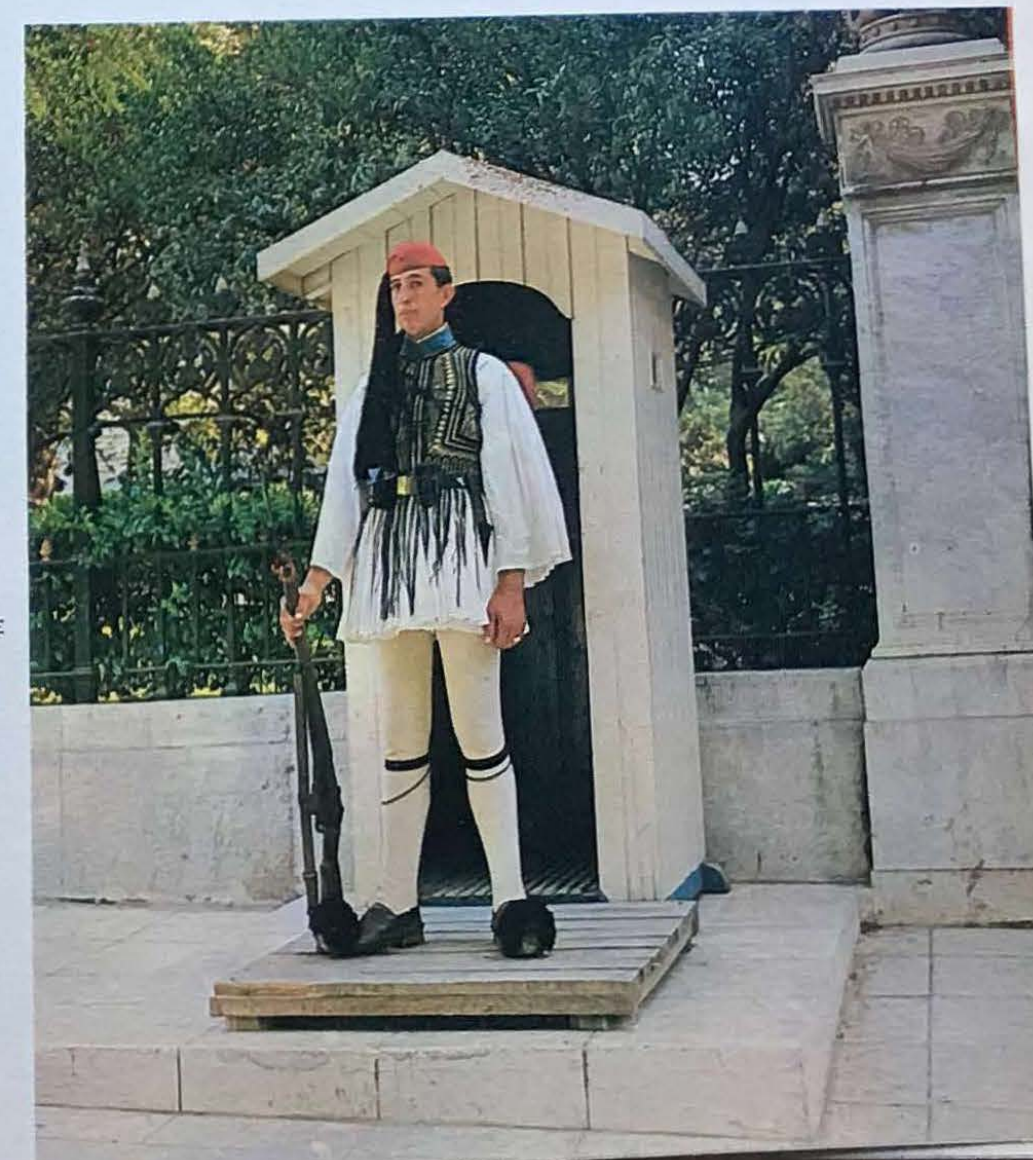
ANCIENT COLUMNS IN POMPEII



A GARDEN COURTYARD IN POMPEII



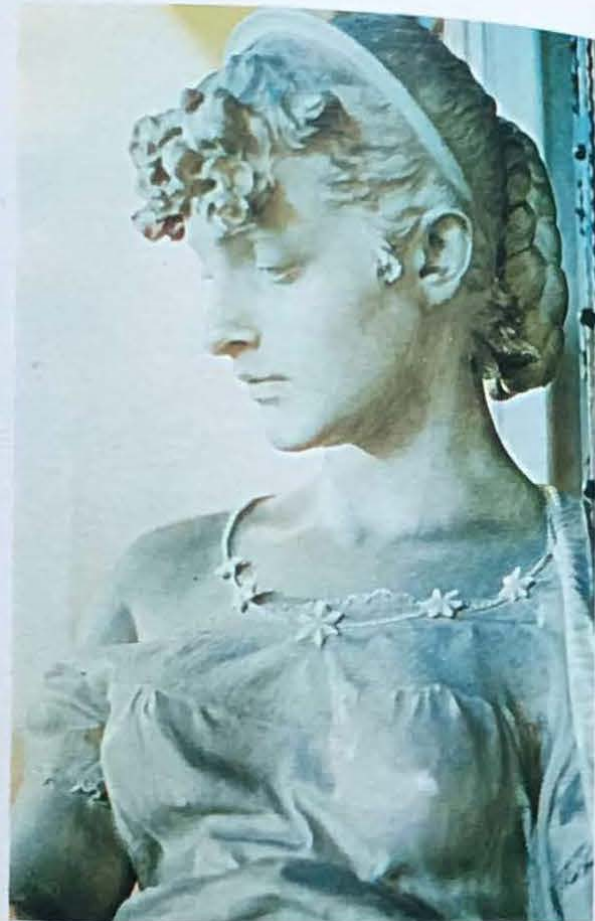
BREAD OVENS IN POMPEII



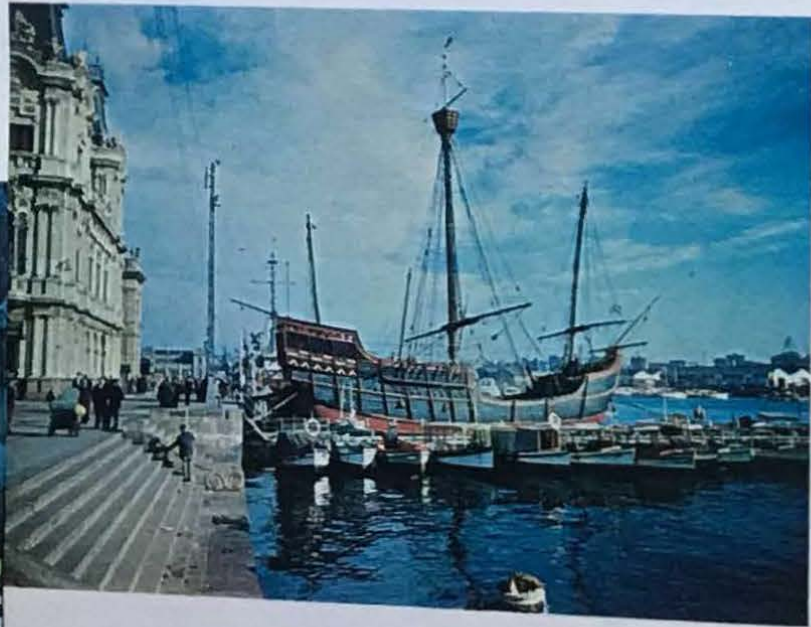
"EVZONE"
GUARD AT THE
ROYAL PALACE



BOY WITH DONKEY FRIEND



DETAIL OF SCULPTURE



"THE SANTA MARIA" FAMILIAR
SIGHT TO SIXTH FLEET SAILORS



SHOPPING
FOR FLOWERS



S
U
P
P
L
Y



LTJG W. N. HOBBS
Supply Officer



WALKER, CSC



BROUSSARD, SHC



THOMAS, SK1



GEROCA, SD1



LUARK, SK1



DAY, SN



BENDIG, SN

S Division



TIPPETT, SK2



SAWYER, SN



MUSSO, DK3



LOUVIER, SK3



RODRIQUEZ, SN



WILLIAMS, SH3



HART, SN



PATTERSON, DK3



MARTIN, SH3

Birthday Party



McCARTY, SK3



FETROW, SN



CABANOS, TN



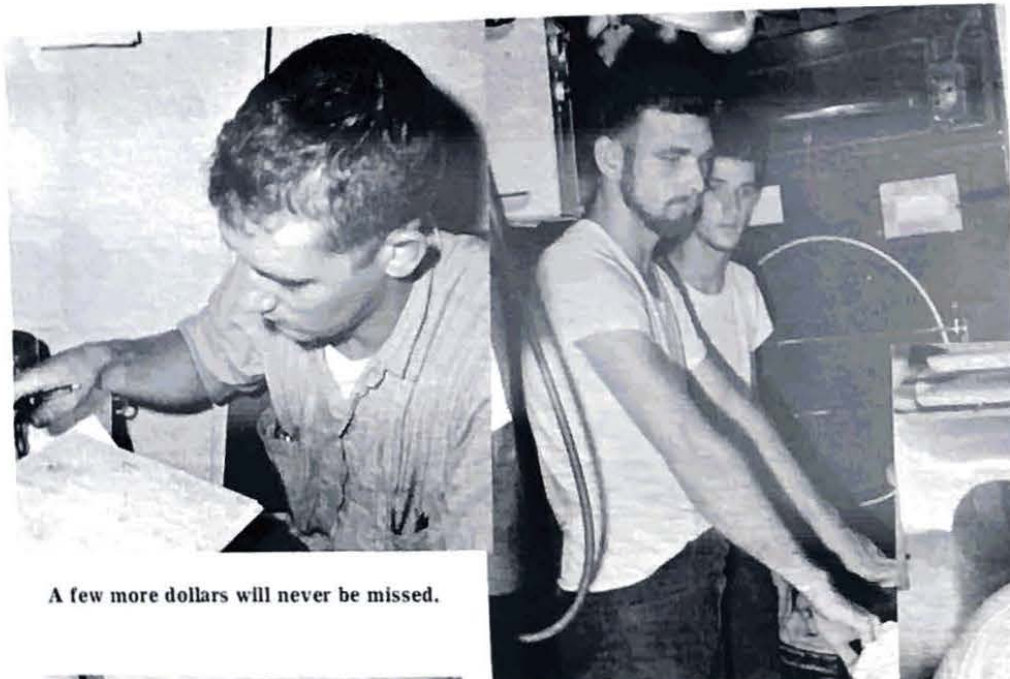
HICKS, SH3



One big cake coming up!



The galley's pride.



A few more dollars will never be missed.



Don't burn it.
Master of the thin slice.



Not the big slice!



Filler-up.



Night baker.



I'll show them who can cook.



A grand feast.



Where are the presents?



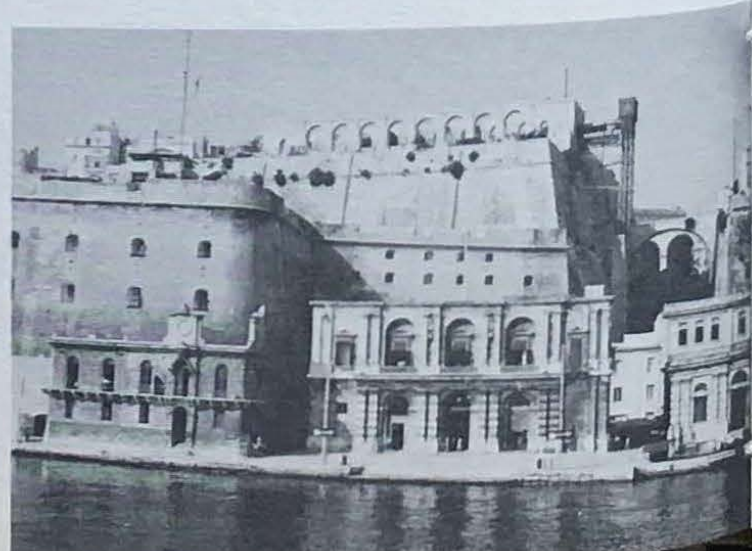
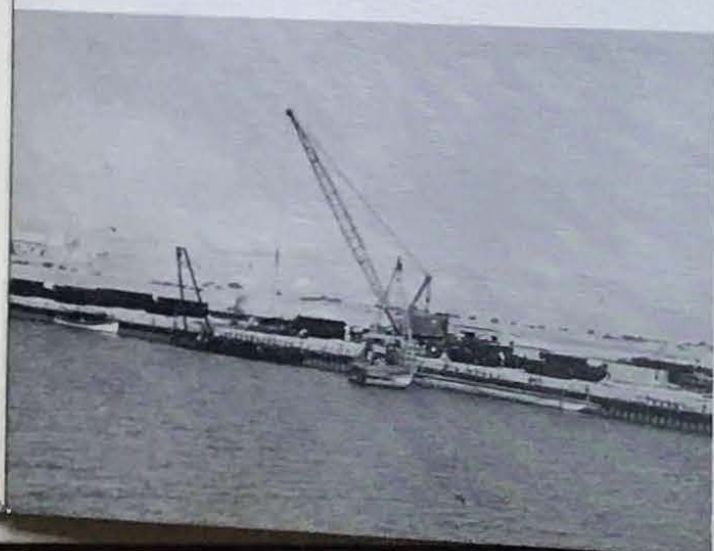
QUINIENTOS
CINQUECENTO
MIL
1000

BANQUE DE FRANCE
1000

1029285
1029281



SUEZ CANAL



O
P
E
R
A
T
I
O
N
S

Ol Division



L. E. J. DENNIS
Operations Officer



LTJG J. B. ENDERS
CIC Officer



LTJG R. W. HARDY
Communications Officer



GLASS, RDC



BUGH, RD2



BIROS, RD3



GRANGER, RD1



MAYER, RD2



STRICKLAND, RD3



BAXTER, RD2



GARCIA, RD2



McGRATH, ETR3



FISHER, ETC



TAYLOR, ETR3



GUTH, ETR3



MILES, ETRSN



McLAUGHLIN, ETRSN



PRICE, RDSN



KOHATA, RD3



SELLERS, RDSN



HARVEY, HMC



FAWCETT, QM1

OC Division



TAYLOR, SM1



RICHMOND, RM1



CIAMBRONE, PN1



ALLEN, RDSN



Good clean fun.



Smile!



McKEOWN, RM2



WAMPLER, RM2



MILLS, RM3



KESSLER, RM3



FITZ, SM3



ARNDT, SM3



PARKER, SM3



RHIP



ALLANDER, RD3



YOUNG, RM3



PIKE, QM3



YOUNG, QM3



JAMISON, RMSN



TARR, YN2



SELL, YN3



ROGNESS, YN3



MAIZMAN, SA



RADZEWICH, RM3



BAUSER, RMSN



SNYDER, RMSN



BORRELL, RMSN



WATERS, SA



MORGAN, SN



COLLERAN, RMSN



DEITZ, SMSN



VENTO, SN



KRUMPUS, QMSN



WHITELOCK, SN



FITZPATRICK, RMSN

Trash is now being assembled on the fantail.



FINN, HM1



LANGSTON, SM2

Home of the standard plan of the day.



Underway



Mr. Clean!



LAFHEY Ladies



Belly up to the bar



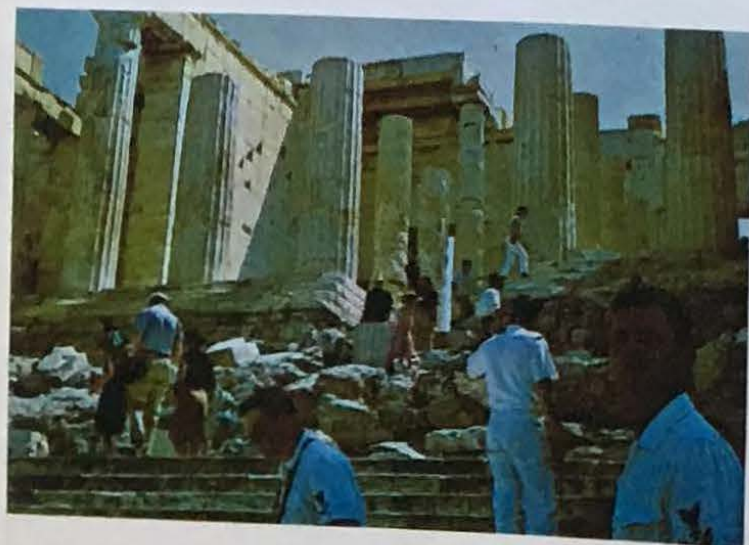
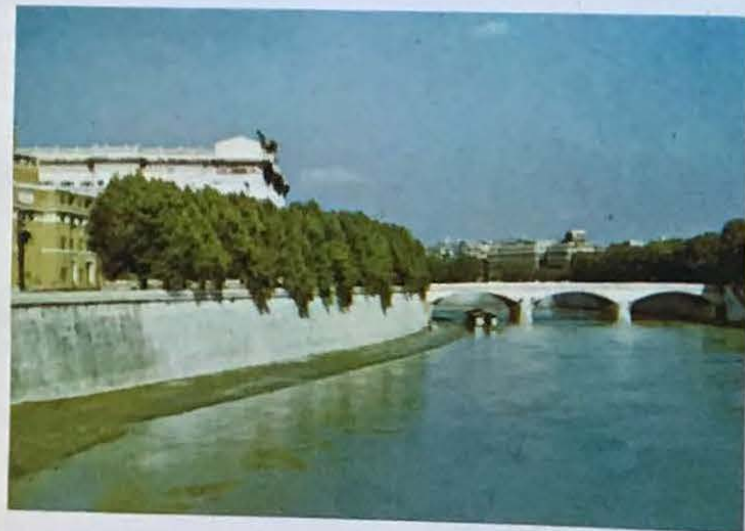
May I have this dance?



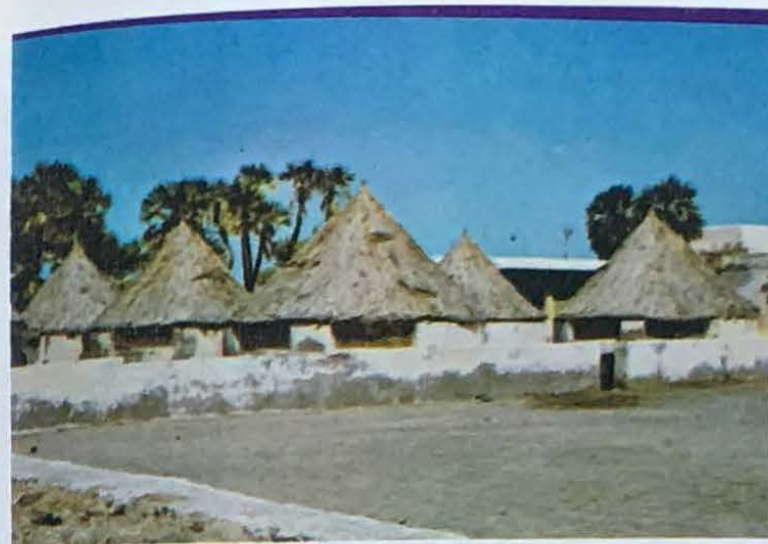
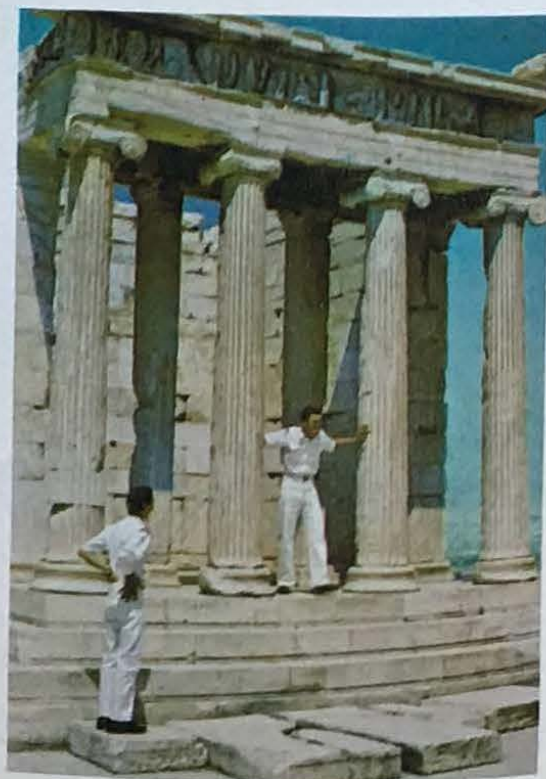
You'll get yours!



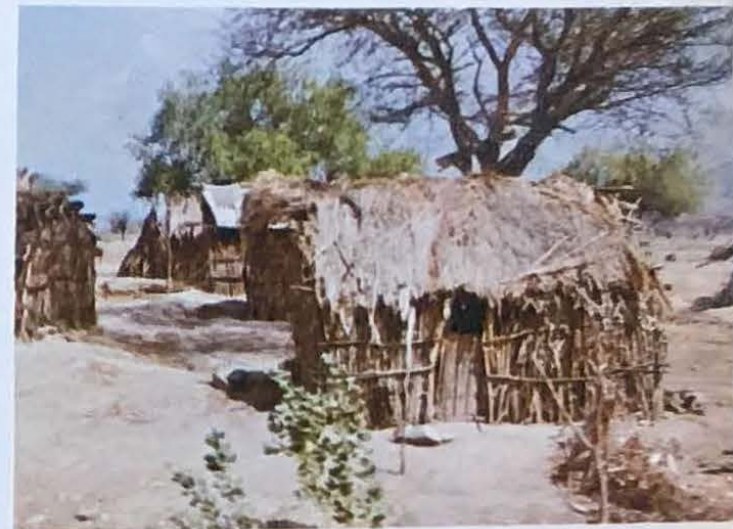
ROMA



A T H E N A



Assab



Kenya



Kenya



Sudan



Sudan



Port Suez



Suez Canal



Valencia



Messina



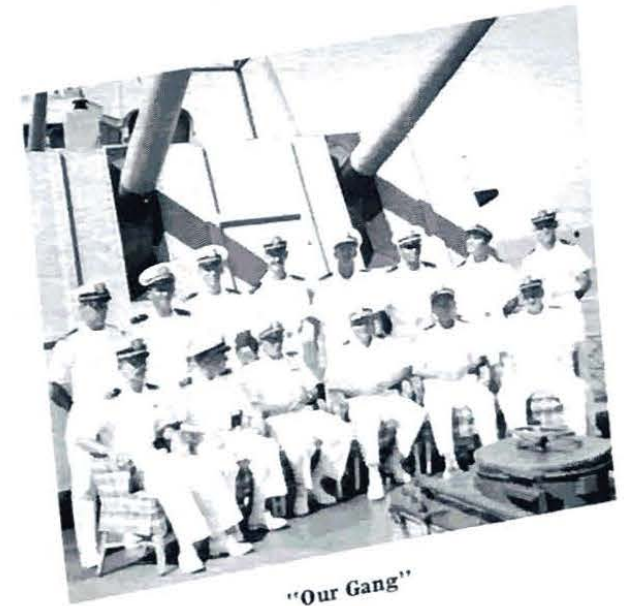
"Boat's-Men"



The Snipes



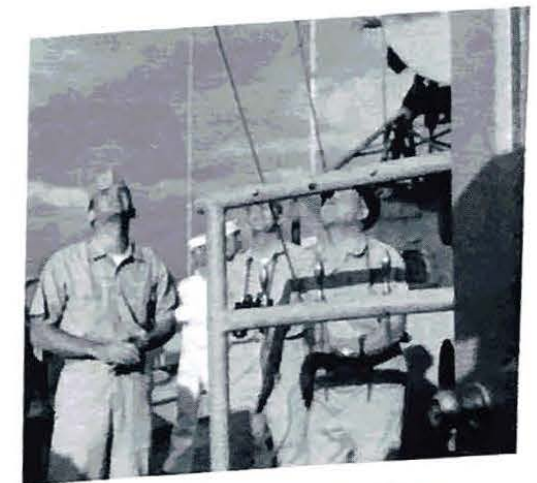
Co-Xo



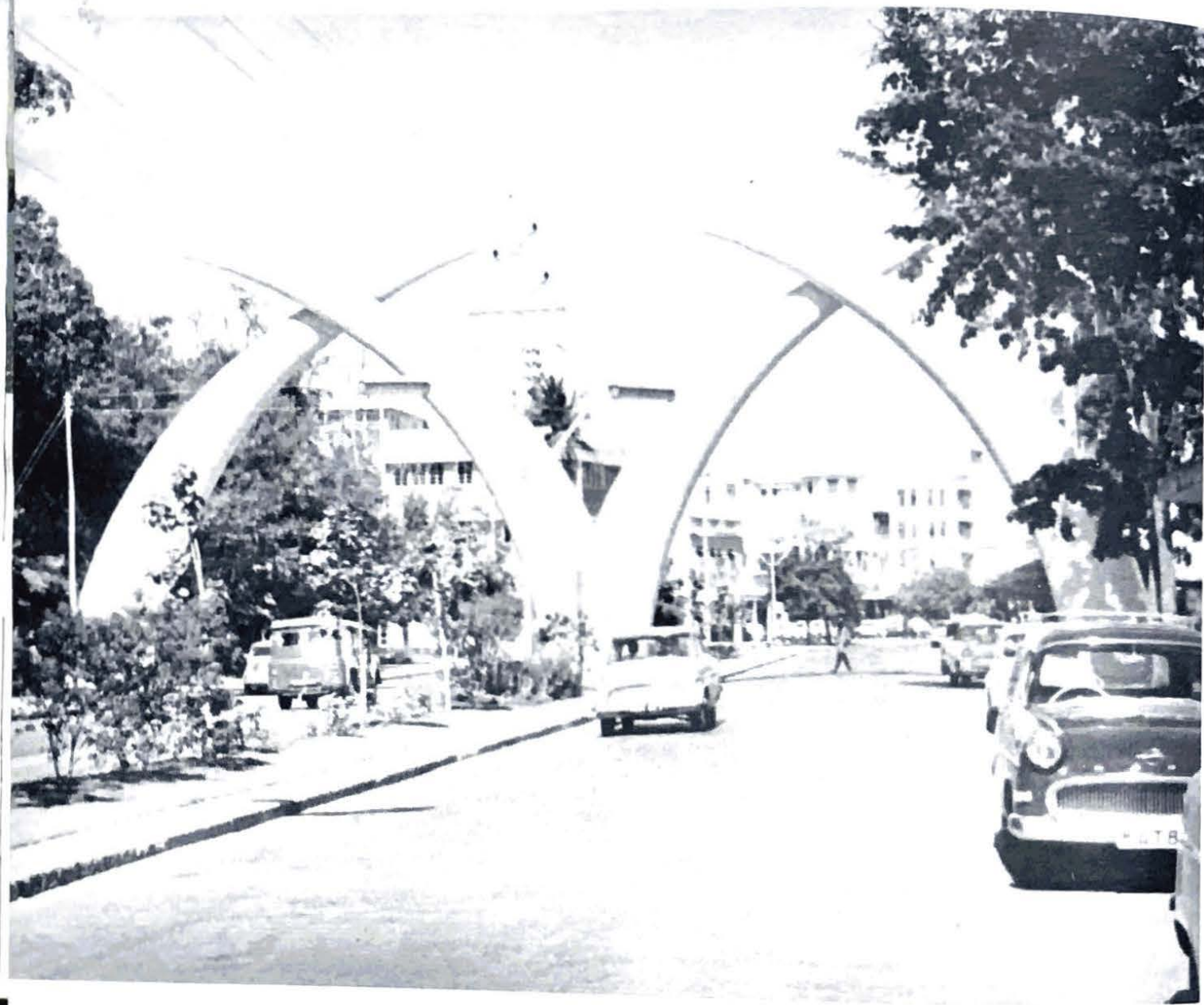
"Our Gang"



Ops and clamp down Po's



Just because he said go fly a kite---



MOMBASA KENYA



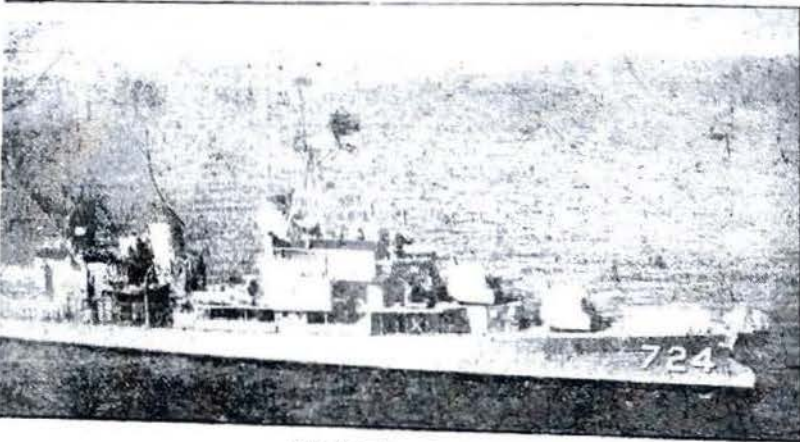
MOMBASA TIMES

No. 21940

SATURDAY, AUGUST 14, 1965

40 CENTS

U.S. WARSHIP ARRIVES IN PORT WITH GIFTS



The American destroyer, USS Laffey (above), pictured entering Kilindini Harbour yesterday.



WITH GIFTS

The most decorated American warship on operational duty, the USS Laffey, arrived in Mombasa yesterday — carrying braille books and typewriters for a school for the blind in Uganda.

The destroyer, which is here on a six-day combined operational and goodwill visit, also brought encyclopaedias and text books for use in schools in East Africa.

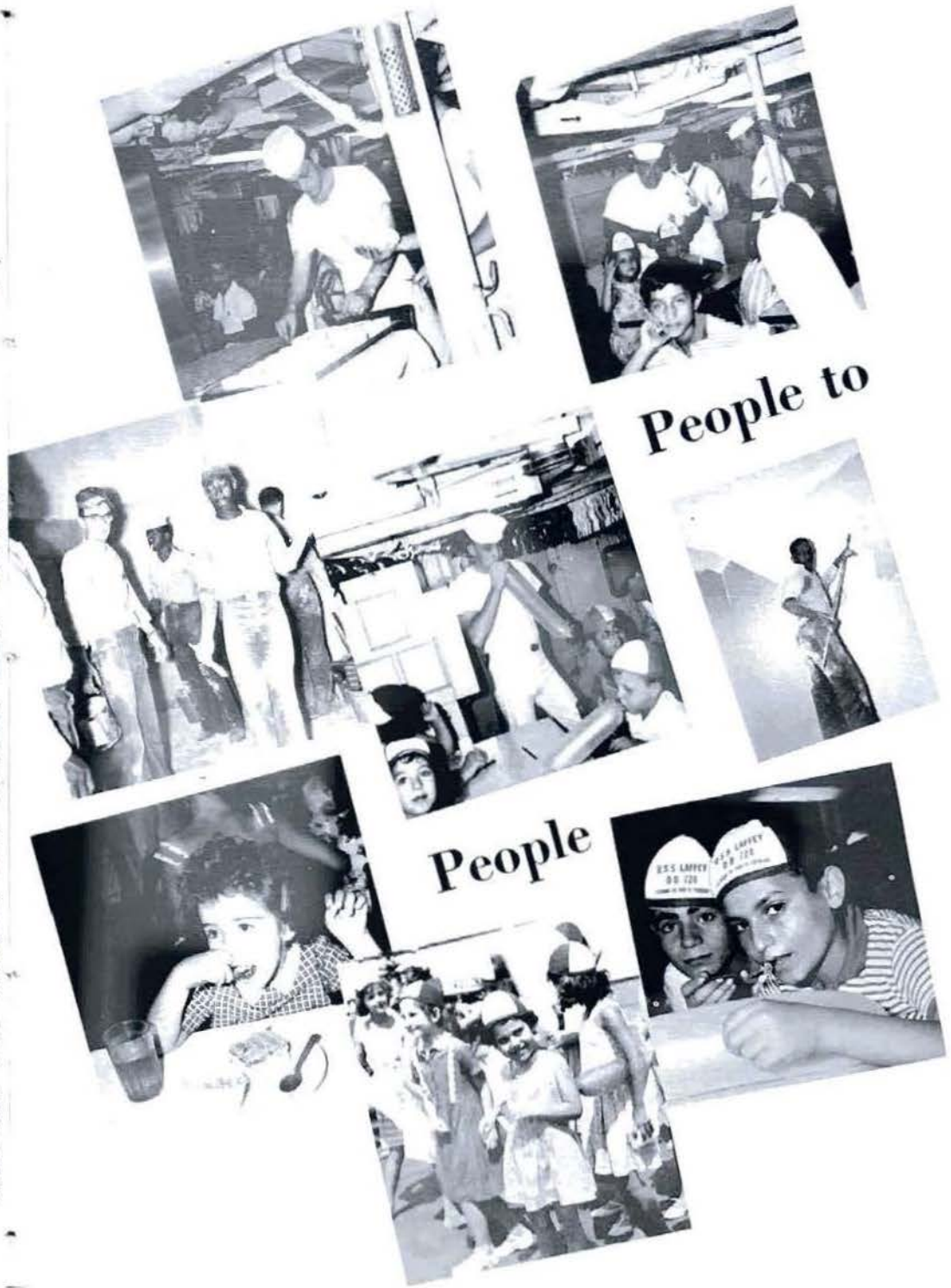
Two days ago the vessel crossed the Equator and some of the 220 men on board still show signs of their transformation from "pollywoogs" to "shellbacks" — the American Navy's traditional crossing-the-line ceremony in which the sailors' heads are shaved.

Many of the men will be visiting the game parks, a sports programme is being arranged, and there are plans to hold an open day on board.

This is the first time the Laffey, which was awarded the Presidential Unit Citation and has won the Battle Efficiency Competition for three consecutive years, has visited Kenya and most of the men have not been to East Africa before.

One of the 15 fliers on board, Lt. J. J. Douglas Andersen, is hoping to find time to meet Mr. Peter Horsey of Kitale, a friend of his parents.

The Laffey came alongside Shimani Oil Terminal yesterday morning, and later moved to anchorage in Hunt Trail. The captain of the Laffey, Commander Kaufman made a number of official visits during the morning, and called at the Kenya Navy base at lunchtime.



People to

People

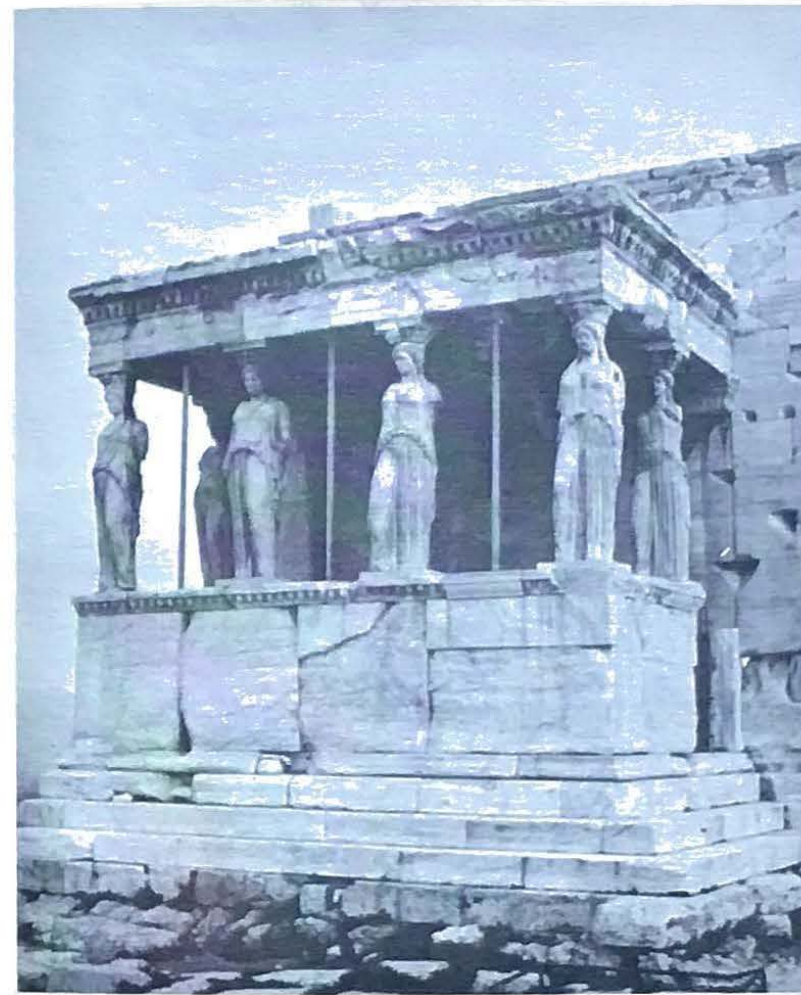


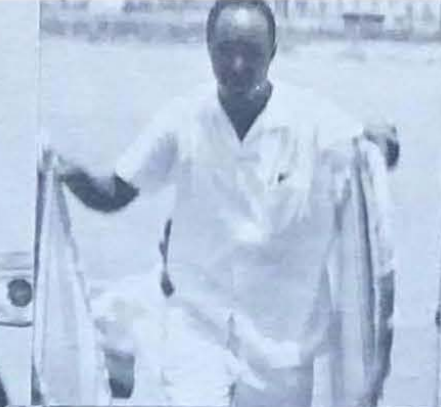
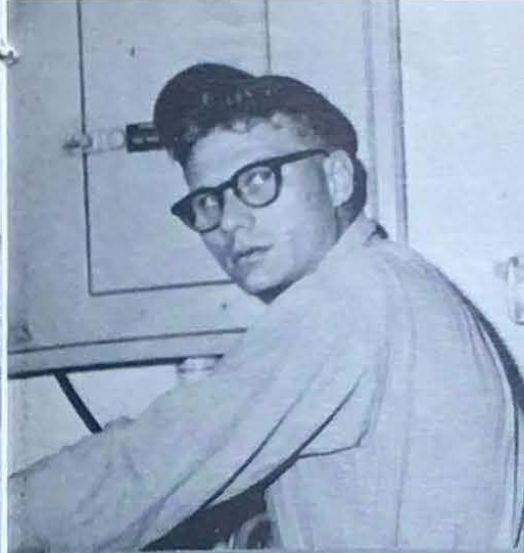
WATCHES



A T H E N S







Fish Stories



The old man and the sea.



The Champs.



With my own bare hands.



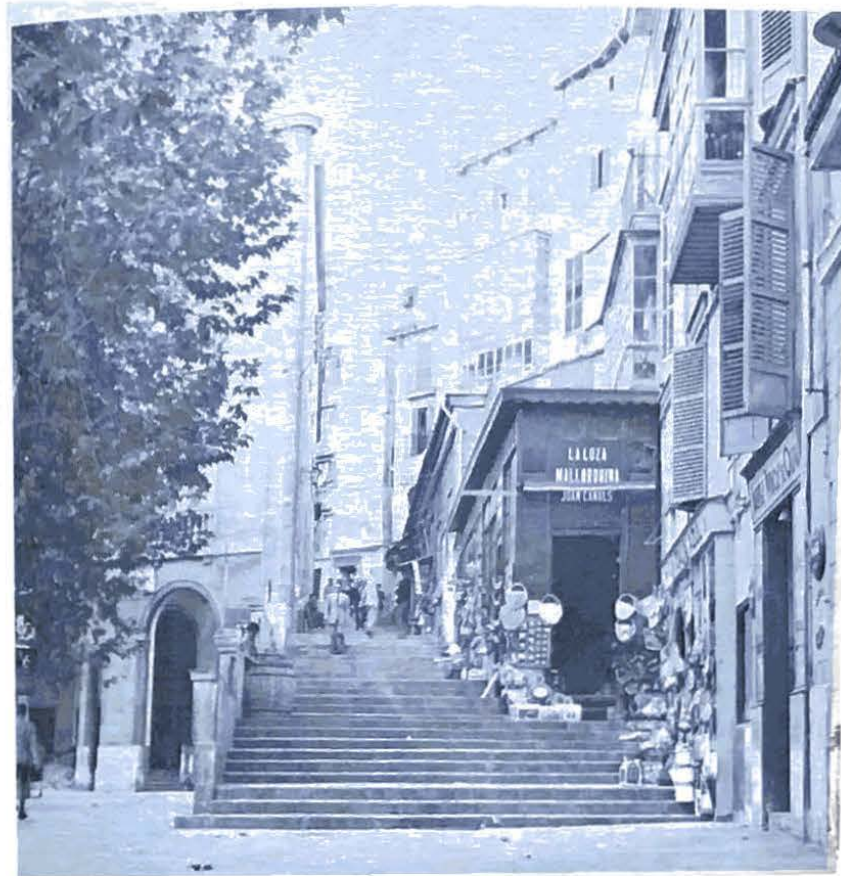
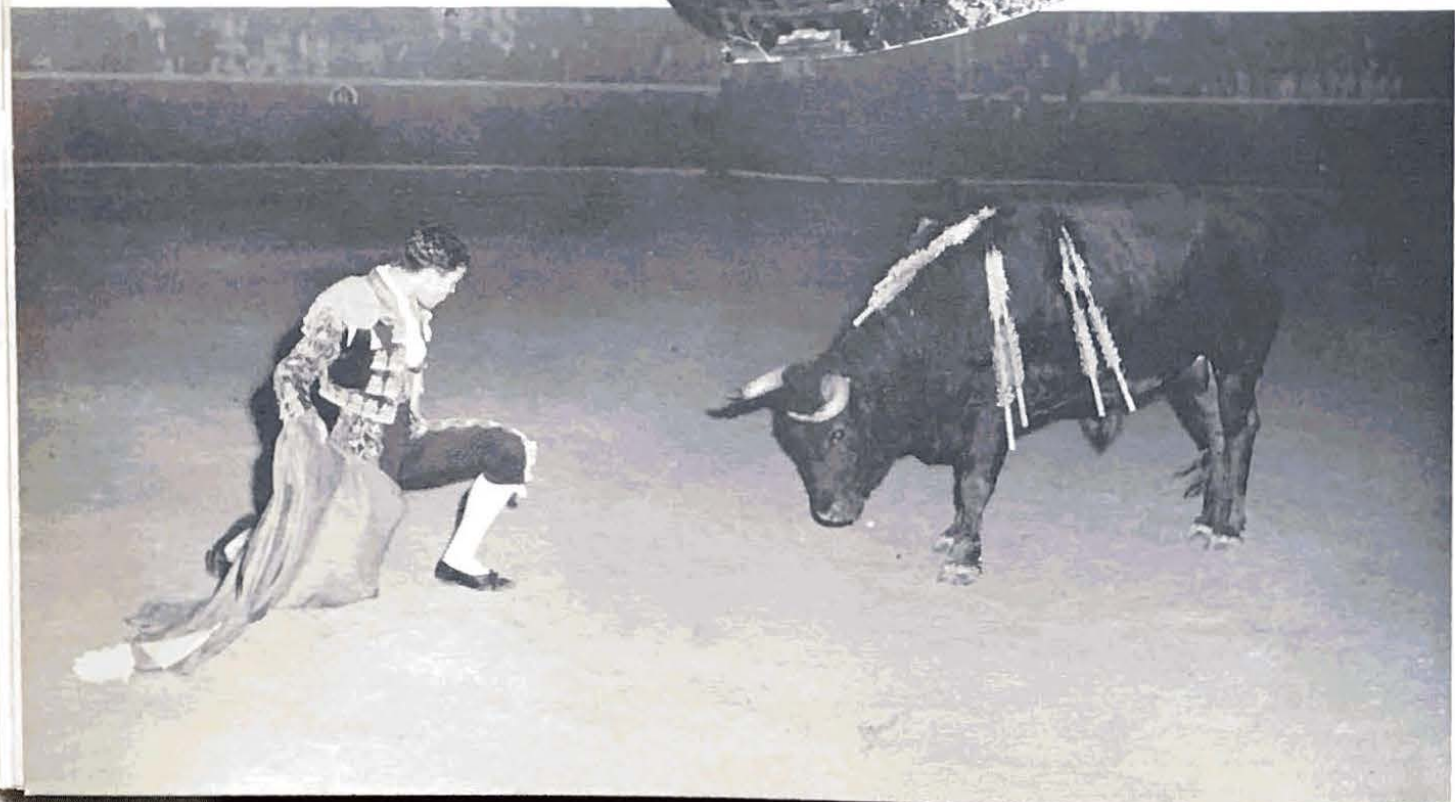
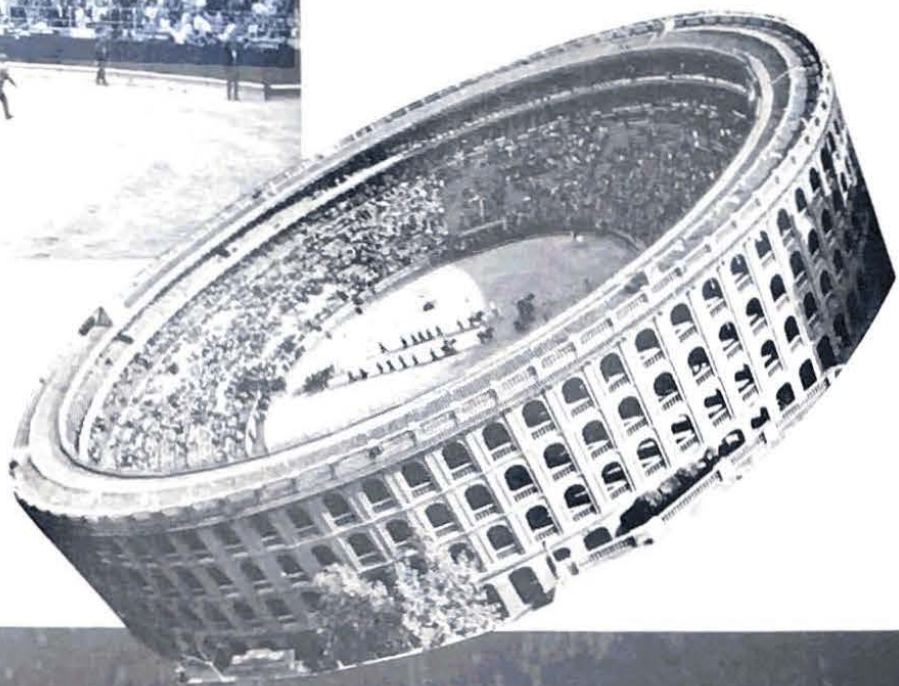
My she looks like good eating.

SPAIN

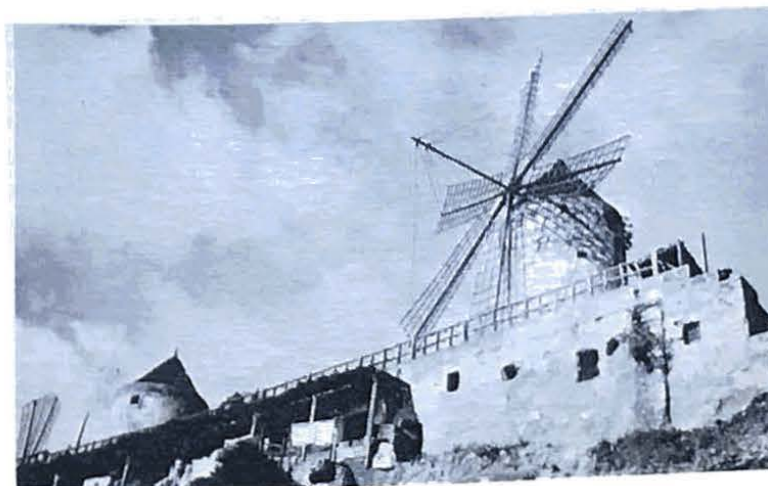
PLAZA DE TOROS MONUMENTAL
LUNES 6 DE JUNIO
Tarde a las 6:30
GRANDIOSA
CORRIDA DE TOROS

6 SELECCIONADOS TOROS
D. IGNACIO SANCHEZ SEPULVEDA DE VELTES
JAIME OSTOS
ANTONIO "CHAMACO"
BORRERO
PACO CAMINO
Actividad a. H. REPUBLICA DE ESPAÑA

A black and white poster for a bullfight. The top part has text in Spanish: "PLAZA DE TOROS MONUMENTAL", "LUNES 6 DE JUNIO", "Tarde a las 6:30", "GRANDIOSA CORRIDA DE TOROS". Below the text is an illustration of a bullfight, showing a matador on a horse attacking a bull. At the bottom, there is more text: "6 SELECCIONADOS TOROS", "D. IGNACIO SANCHEZ SEPULVEDA DE VELTES", "JAIME OSTOS", "ANTONIO 'CHAMACO' BORRERO", "PACO CAMINO", and "Actividad a. H. REPUBLICA DE ESPAÑA".



The city of Palma is an historic city. Today it is a community of 150,000 persons out of the island's total population of 350,000 people. It offers a wide variety of attractions from its towering Cathedral, La Seo, which can be seen as we enter the port, to the palace of the Abnudaina, where the kings of the short-lived Mallorcan dynasty once ruled. Its age can be indicated by the fact that its earliest history is recorded the year 123 B.C. when the Romans conquered Mallorca uniting it with the other islands of the archipelago to form a Roman province.



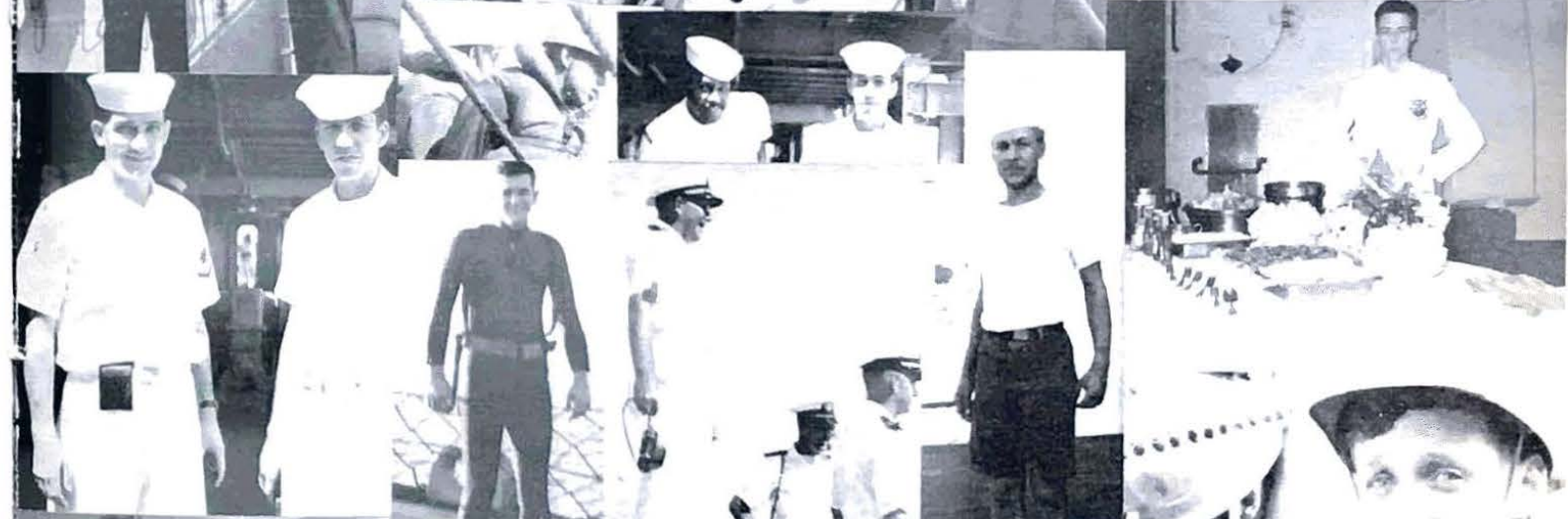
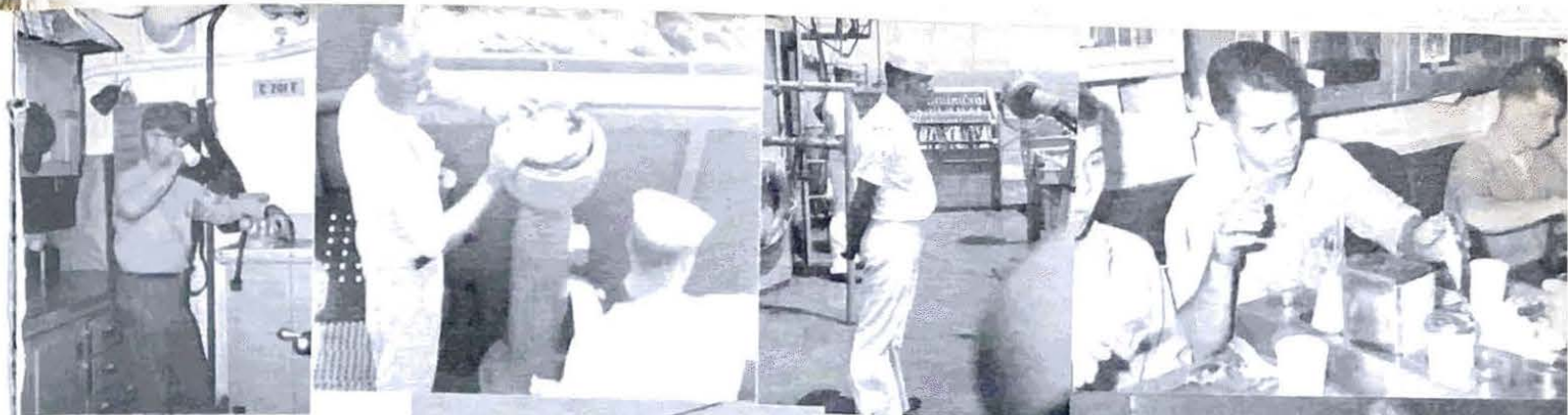


Three in a row!

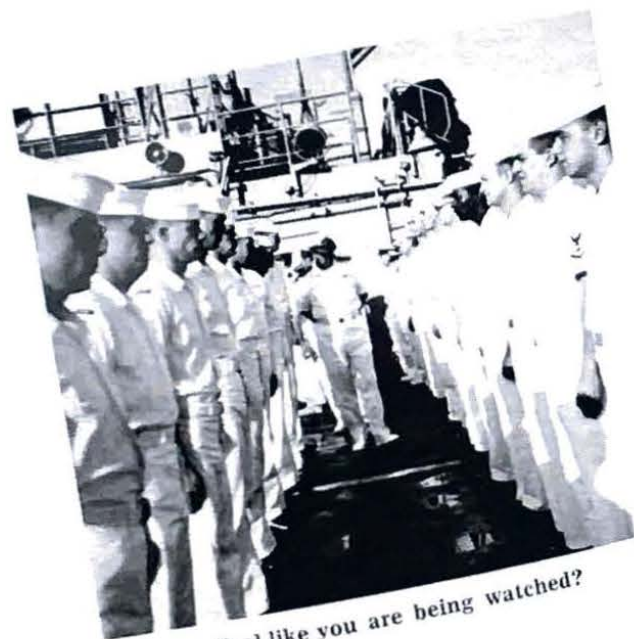
Spit and Polish



The Red E



Honor Guard



Feel like you are being watched?



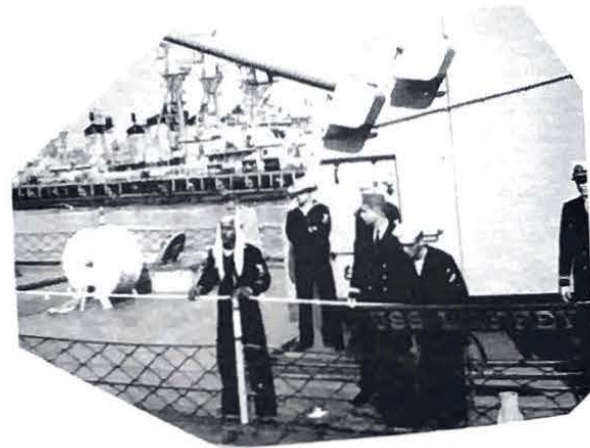
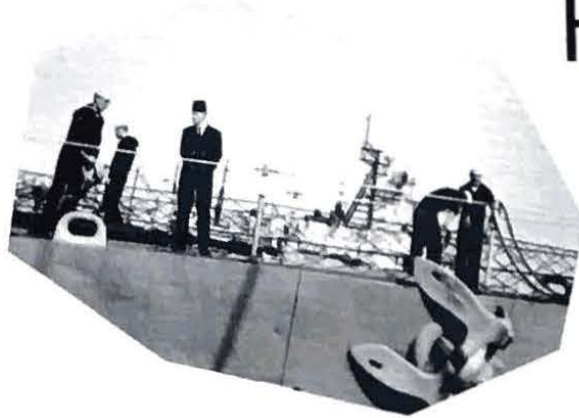
One in every crowd.



What's missing?



HOMECOMING



HARRIS, RMSN



LERER, SN



KNECHT, SN



CANIPE, SN



ANDREW, SN



BOMAR, SN



SELLERS, SN



ZITO, SN



HAYNES, SN



CHEATLE, SN



DAMBACH, SN



SANCHEZ, TN



PACLEB, TN



DELA ROSA, TN



McKEITHAN, SA

CRUISE BOOK STAFF



LTJG S. ZITIN
DCA



LTJG K. D. WALMA
2nd Division



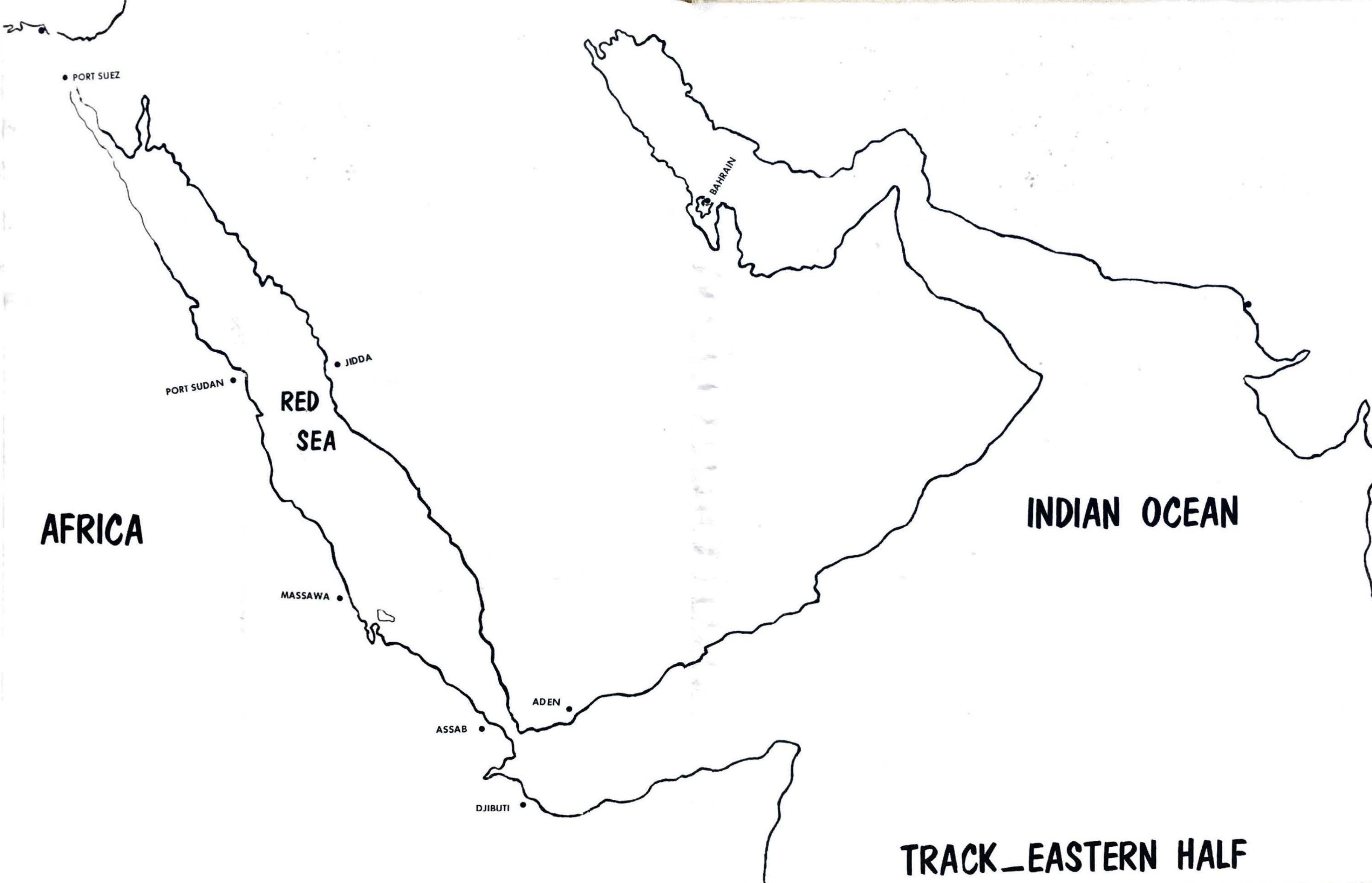
CLARK, GMG2



COLEMAN, EM3



FALVEY, FTG3



• PORT SUEZ

• PORT SUDAN

RED
SEA

• JIDDA

• MASSAWA

• ASSAB

• ADEN

• DJIBUTI

BAHRAIN

AFRICA

INDIAN OCEAN

TRACK_EASTERN HALF

