

USS LAFFEY

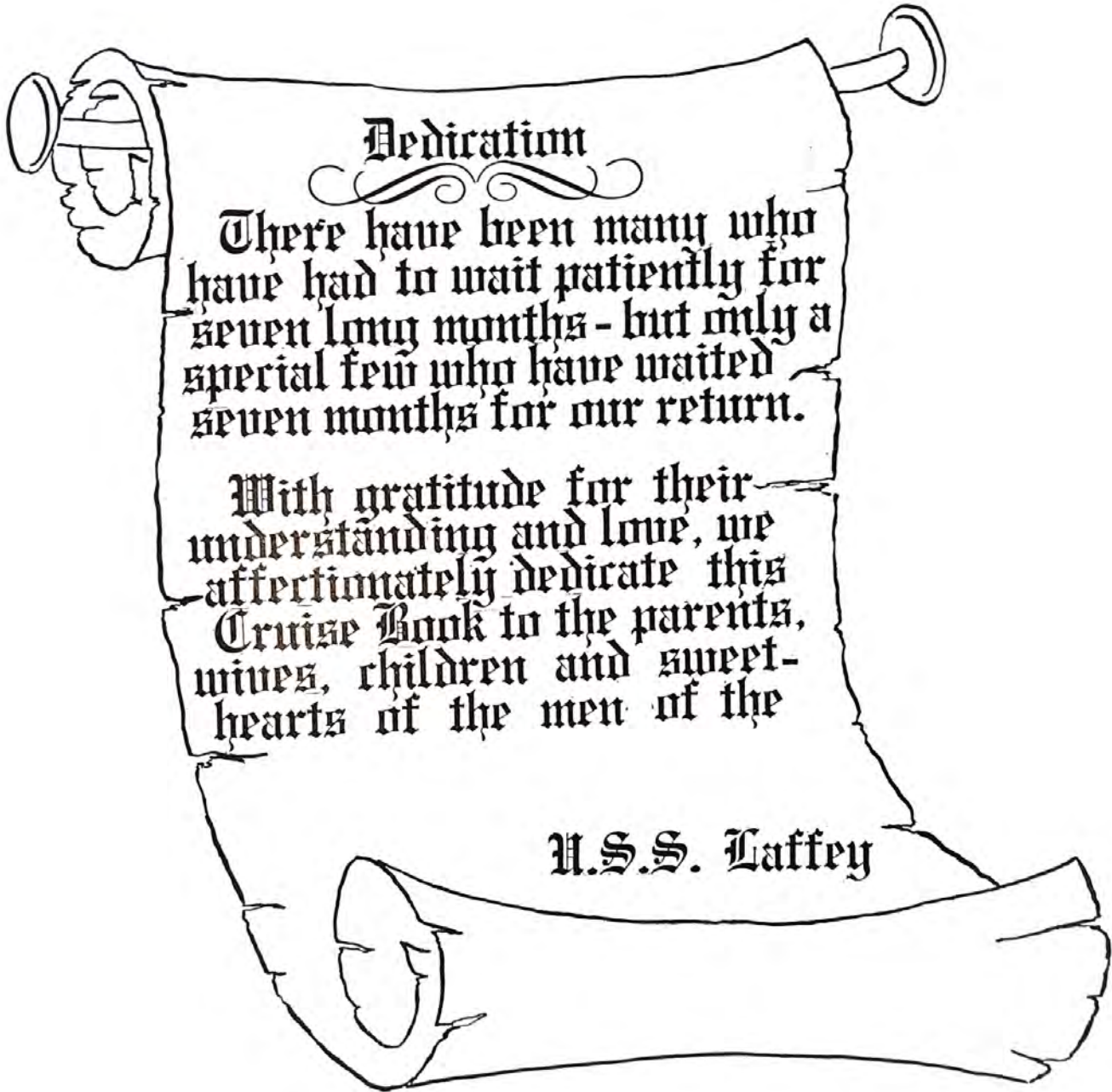
(DD-724)

MEDITERRANEAN

MIDDLE EASTERN CRUISE



1960



Dedication

There have been many who have had to wait patiently for seven long months - but only a special few who have waited seven months for our return.

With gratitude for their understanding and love, we affectionately dedicate this Cruise Book to the parents, wives, children and sweet-hearts of the men of the

U.S.S. Caffey



SHIP'S HISTORY

U. S. S. LAFFEY (DD-724)

The USS LAFFEY (DD-724) is the second ship of the fleet to bear the name and like her predecessor boasts a proud history.

Both ships were named for Seaman Bartlett Laffey who served aboard the USS PETREL in 1864. Laffey was decorated for the gallant conduct he displayed while he, along with his landing party, successfully defended an important battery against an onslaught of Confederate troops in Yazoo City, Mississippi.

The first LAFFEY (DD-459) was lost in the Naval Battle of Guadalcanal on 13 November 1942, after gallantly attempting a night torpedo attack on the Japanese battleship Hiei. Her Commanding Officer, Lcdr. W. E. Hank, went down with his ship, leaving behind a brilliant war record.

The present LAFFEY was built by Bath Iron Works Corporation, Bath, Maine. She was launched on 21 November 1943 and commissioned at Boston Navy Yard on 8 February 1944. After very little time for shakedown exercises, LAFFEY departed from New York with other ships of her division, (DESDIV 119 in DESRON 60) to escort a large convoy to the United Kingdom.

She served only briefly in the European Theatre but gained first-hand experience as she brilliantly played the multiple role that was expected of this versatile destroyer. It was during this period that LAFFEY received her first hit while taking part in the bombardment of Cherbourg. Still a relatively new ship, but after having had her first taste of battle, LAFFEY returned along with her division to the Boston Navy Yard.

Early in July, after a brief stay in Boston for minor repairs and alterations to her fire control equipment, LAFFEY pointed westward to the Pacific and a new theater of battle. In the remaining months of 1944 she proved invaluable as a screening ship for carrier strikes and assisting in shore bombardment for landings at San Pedro Bay, Mindaro, Lingayeu Gulf and Iwo Jima.

Early in 1945, LAFFEY as a part of Task Group 54, got underway for the Okinawa Campaign which was to be the high point of her career. On 11 March

1945, while acting as radar picket ship about 30 miles from Okinawa, LAFFEY encountered over 50 enemy planes in a grueling battle which lasted 80 minutes. When the action was over she had downed 9 planes but in twenty-two separate attacks had been hit by eight suicide planes. Personnel casualties amounted to 103 with 32 dead. Heavy material damage required she be towed into port. Even in her battered condition, it was only six days before LAFFEY'S battle-weary but determined crew had her underway for the United States.

After many assignments of a more peaceful nature, LAFFEY was decommissioned on 30 June 1947 at San Diego. It was not until January 1951 that she was recommissioned and sent to Norfolk, Virginia for extensive overhaul — this time in preparation for the Korean Campaign.

In January 1952 LAFFEY steamed once again, westward with DESDIV 261 and as flagship of DESRON 26. She was called upon for many shore fire operations in Wansau Harbor and expended nearly 6,000 rounds of 5 inch ammunition against heavy shore batteries. She received no damage although she engaged in several duels with enemy heavy guns.

After Korea LAFFEY returned to Norfolk and resumed her normal cycle of training, upkeep, and overhaul.

In April 1959 LAFFEY left her old Division and Squadron to become a part of DESDIV 321 in DESRON 32.

This February 1960 brings to an end another LAFFEY cruise to the Mediterranean Area, Red Sea, and Persian Gulf. She's had a long but profitable cruise and the assignments she has carried out in these past seven months add to the proof that LAFFEY is a proud and able ship and a valuable asset to the fighting forces of the United States Navy.

LAFFEY is an old and proud veteran of two wars. She wears the scars of battle and displays many decorations which tell of her glorious history. LAFFEY is a proud ship and with her many sisters of the destroyer force stands ready to meet any challenge and to carry out any assignment.



H. L. CLARK, CDR., USN
COMMANDING OFFICER

U. S. S. LAFFEY (DD-724)
Care of Fleet Post Office
New York, New York

26 February 1960

Our cruise has been a long one. We said good-bye to families and friends and left Norfolk in the heat of August; and we return in the chill of February.

Our cruise has been an interesting one. We saw the peoples and cities of many countries - France, Italy, Greece, Libya, Spain and Lebanon in the Mediterranean, and Egypt, Saudi Arabia, Bahrein, Qatar, Iran, Pakistan and Aden during our operations in the Middle East. We have performed many and varied tasks - fueling and replenishment at sea, rescue destroyer duties, firing, "Med" mooring, patrolling, and operating with the Iranian Navy. We have steamed through the Persian Gulf. Each of us has his own memory of the cruise - sunrise on a morning watch, transit of the Suez Canal, friends in foreign ports, or some personal job well done. May this book be for us a permanent record and reminder of a successful deployment.

Because our cruise has been, finally, a successful one. We can say with pride that Laffey steamed thirty-eight thousand miles - from Norfolk to Gibraltar to Karachi and back again - without a major casualty to personnel or equipment, and met every commitment. But our cruise was successful also in ways which cannot be measured - we have grown in experience, knowledge and ability, and each of us has done his part in building the greatest deterrent of war - a better understanding among the peoples of the world. You have done your jobs well. I am proud of you, and I am proud to be your Captain.

H. L. Clark
H. L. CLARK

SHIP'S
 NAVY DEPARTMENT
 UNITED STATES OF AMERICA
 OFFICERS



J. J. ALBRIGHT, JR., LCDR., USN
 EXECUTIVE OFFICER



L. A. HIGGINS, LT., USN
 OPERATIONS OFFICER



R. E. KARAS, LTjg., USN
 COMMUNICATIONS OFFICER



T. M. BROWNE, LTjg., USN
 C.I.C. OFFICER



G. D. LEVEY, LTjg., USNR
 ENGINEER OFFICER



R. E. GOOD, LTjg., USN
 M.P.A. ASSISTANT ENG. OFFICER



F. W. HOLLOMAN, LTjg., USN
 D.C.A. & "R" DIVISION OFFICER



J. S. MANSFIELD, LTJG., USN
A.S.W. OFFICER



R. H. McLEOD, ENS., USNR
2nd DIVISION OFFICER



C. E. BROWN, LTJG., USN
SUPPLY OFFICER

OFFICERS NOT PICTURED

J. S. TALUSKIE, LTJG., USNR
GUNNERY OFFICER

J. R. DENNEN, LTJG., USNR
GUNNERY OFFICER

C. P. MONTGOMERY, ENS., USNR
FIRE CONTROL OFFICER

G. F. THEISZ, JR., ENS., USNR
ELECTRONIC MAINTENANCE OFFICER

F. L. SCHULTE, ENS., USN
ASSISTANT COMMUNICATIONS OFFICER



R. R. HAWTHORNE, ENS., USNR
1st LIEUTENANT



YEOMAN



RADARMEN



COOKS



BOS'N MATES



ET'S



QUARTER MASTERS



GUNNERS



FIRE CONTROLMEN

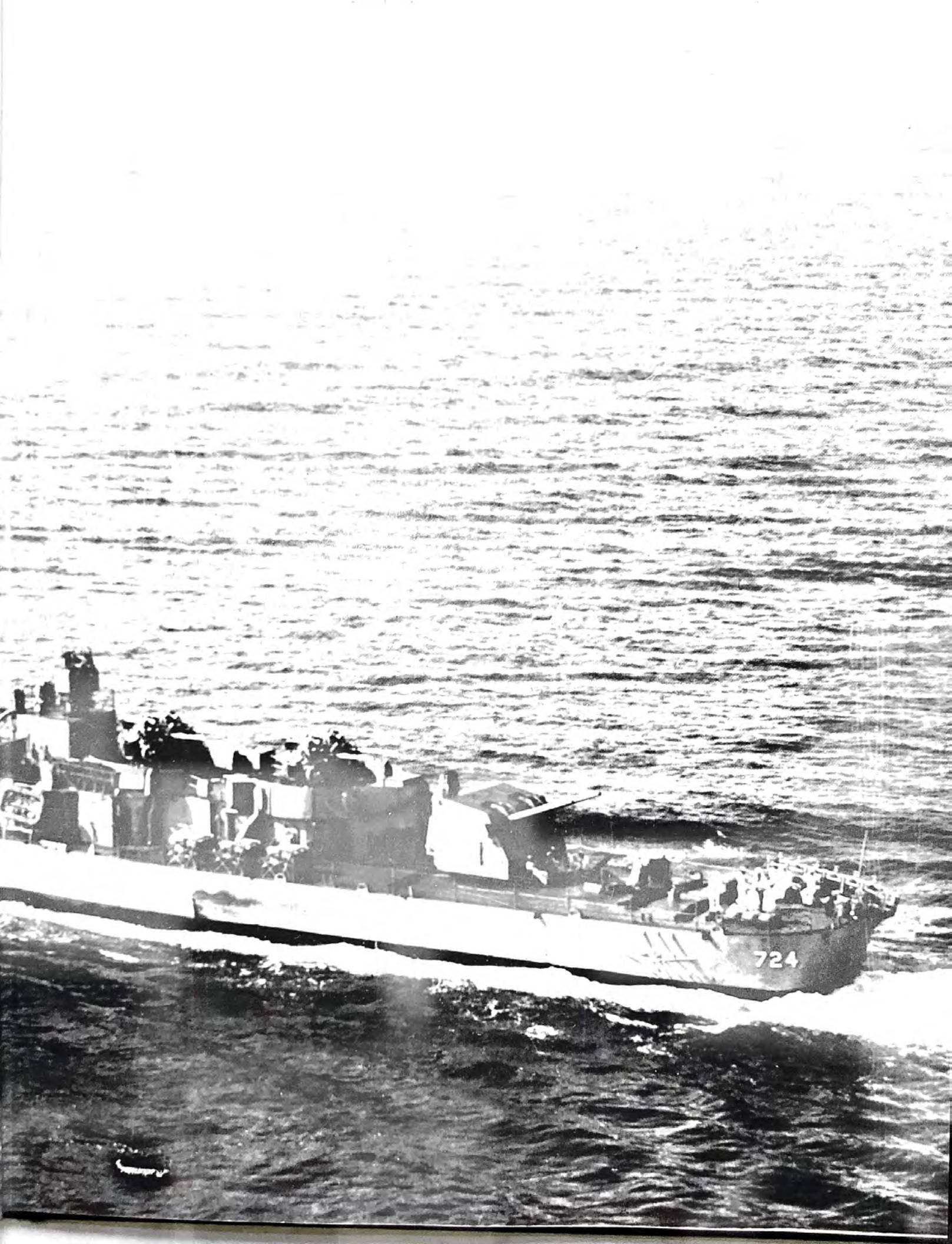


SKIVIE WEVERS



SNIPES







"FEASTING UP"



L. to R. TOLEMAN, BROOKS, CONKLE, SPRAY, JORDAN, KNIPPENBURG.



R. HANKINS, WOMACK, COLLINS, BICE, KONOPKA, FORD.

SHIP'S GOING AWAY PARTY



RADIOMEN



Front Row, L. to R.: GUARANTE RMSN, MARTIN RMSN, LIPPI RMSN, DOLL RMSN.
Second Row: LARSON SN, LAMPKIN RM3, DRISCOLL RM1, MARCHANT RM3.

OPERATIONS DEPT.

Front Row L. to R.: ALEXANDER RDSN, FLANNARY RDSN, FORD ET3, MC BRINN RDSN, MINITER RDSN, VANEK RDSN.
Second Row: ADAMS ET1, ANDRES RDC, ABRAMS RDSN, LINVILLE ET3, SHANHOLTZ RDSN, MILLER RD3, HEIBERT RDSN, LAROS RDSN.
Not Pictured: GREEN ETSN.

ELECTRONIC TECH'S



RADARMEN

3"
GUNNERS



Front Row L to R: LESSARD GMSN, RUBLE GM3, HALL GM1.
Second Row: WEAVER GM2, BOBICK GMSN, LTjg. DENNEN, GUNNERY OFFICER.
Third Row: SCHETZKA GMSN, SULLIVAN GM3.

5"
GUNNERS



Front Row: TINSLEY SN.
Second Row L to R: ANTHONY SN, HORTON SN, MORTON GM2, LUSK GM2.
Third Row: ENS. MANSFIELD ASW OFFICER, JONES GM3, HENDERSQN SN, LONDKE GM3,
ROBINSON GM3.
Not Pictured: SWEENEY GM1.

GUNNERY
DEPT.

FIRE CONTROL MEN



Front Row L. to R.: PETERSON FTSN, HJERLIED FT2, SAUNDERS FT3.
Standing: McCOY FTSN, THOMPSON FTSN, GOWENS FTSN, COLLINS FT1, LANNEN FTSN,
KONOPKA FT3.
Not Pictured: GARBINSKEY FTC, BORELAND FT3.

SONARMEN



Front Row L. to R.: SHOOP SO3, GIOVE SO3, COMMIRE SO2, BRAMBLETT SOSN.
Standing: BURPEE SO3, PLOTH SOSN, CRABB SO3.
Not Pictured: SUBDA SO2.

3rd DIVISION

1st DIVISION



Front Row, L. to R.: BOSCOE SN, HOWELL BM1, SNELLINGS BM2, WILSON BM3.
 Second Row: PAPAEO SN, CRYSEL SN, CAVANAUGH SN, PEDERSON SN, CARVER BMSN, KARLIE SN, EBERT BMSN.
 Not Pictured: CONKLE SN, BROWN SN, PIETRUCCI SN, ABER SN.

2nd DIVISION



Front Row, L. to R.: CLARK BMSN, ZOLL BMSN, JERVIS BM2, WILLIAMS BMSN, SLAUGHTER SN.
 Second Row: UBIL SN, SCHULDEN SN, COX BM3, BROWN BMSN.
 Third Row: BETTINGER SN, ZINK SN, HOSKINS SN.
 Not Pictured: CALETTI SN, STONER SN, NEWLON BM3, REDMON SN



**S
U
P
P
L
Y
D
E
P
T.**

L. to R.: RALPH, SN; ENS. BROWN, SUPPLY OFFICER; MOSKIE, DK3; HESTER, SK3; BRAUND, SK3; WOODS, SK3; PITARD, SK3.

NOT PICTURED: LARKIN, CS2; TAYLOR, CS3; MORSE, SA; O'NEAL, CS2; MENDOZA, TN; WALTERS, TN; SIPIO, SD3; LABRIE, SH3; CLARK, SH3.



ACE CLEANERS



THE ICE CREAM MAN

SHIPFITTERS



Front Row, L to R: SKRIPKO SFP3, LEHMAN DC3, SLOAN SF1.
Standing: MILLER, FN, REES FN, NEULEIB SF1, PERRIN FN.

Front Row L to R: HEFLIN FN, JORDAN EM3, SPRAY EMFN, KNIPPENBURG EM2.
Standing: WHATLEY EMC, BROOKS EM3, TOLEMAN IC3, BLAKE IC3.
Not Pictured: PHELPS EM2, GREEN EM2, SPRINGER EMFN.

ELECTRICIANS



ENGINEERS

MACHINISTS MATE



Front Row L to R: MARTIN MM3, CARTER MMFN, PENN MM3, DAVIS MMFN.
 Second Row: DEVLIN FN, ELLIS FN, PIFFAT FN, CHASE MM2.
 Standing: CARLEY MM1, SHAFFER MM3, MUMFORD MM3, SCHROCK FN, SCHMITT MMFN, COOKE FN, CLASS FN.
 Not Pictured: PHELAN MMFN, ADAMSON MMFN, ANDERSON MMC, ROMANOWSKI FN, EICHSTEADT MM3, MOLOWSKI MMFN, KAUS FN, BOARDMAN FN, CRAVER FN, HANKINS MM1, LAVOUN FN.

BOILERMEN



Front Row L to R: CAMPBELL BT1, WILLIAMS BT2, STALLARD BT3, PINKSTON BT3, EDWARDS BT3, PEREZ FN.
 Second Row Standing: PENDER FN, BYRD BT3, MOON BTFN, HENDERSON MRFN, CHANDLER FN, GREEN BT3, JOHNSON BT1.
 Third Row Standing: CROSE FN, DIDSZUHN FN, HUDAK FN, KOPSZYWA FN.
 Not Pictured: SLOAN BT1; MacCASKILL FA, SMITH FN, VAUGHN BTFN, SCHUMACHER BTFN, LONG BT3, BACCUS FN, BROWN FN.

ENGINEERING

A I G A N G

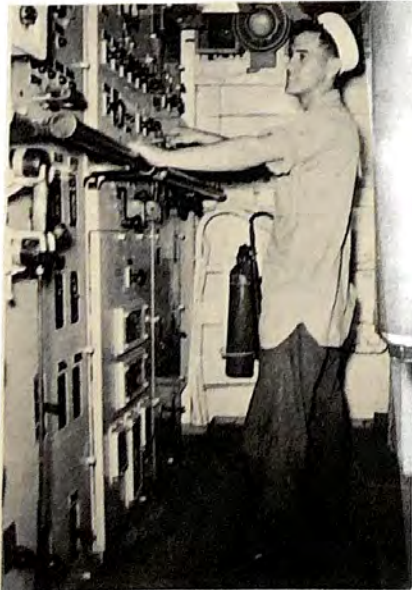


E N G I N E E R S

Front Row L to R: JANS FN, PAGLIEI FN, MARTIN EN3.
Standing: McCALL, FN, ELSBERRY MM3, MOREHOUSE MM1.
Not Pictured: BIQUE MM1, JAGDHUBER ENFN, VANDERHOOF FN.



"OH THAT SUNSHINE"



BROOKS ON WATCH



ANOTHER BULL SESSION



UNDERWAY, AFT. ENGINE ROOM

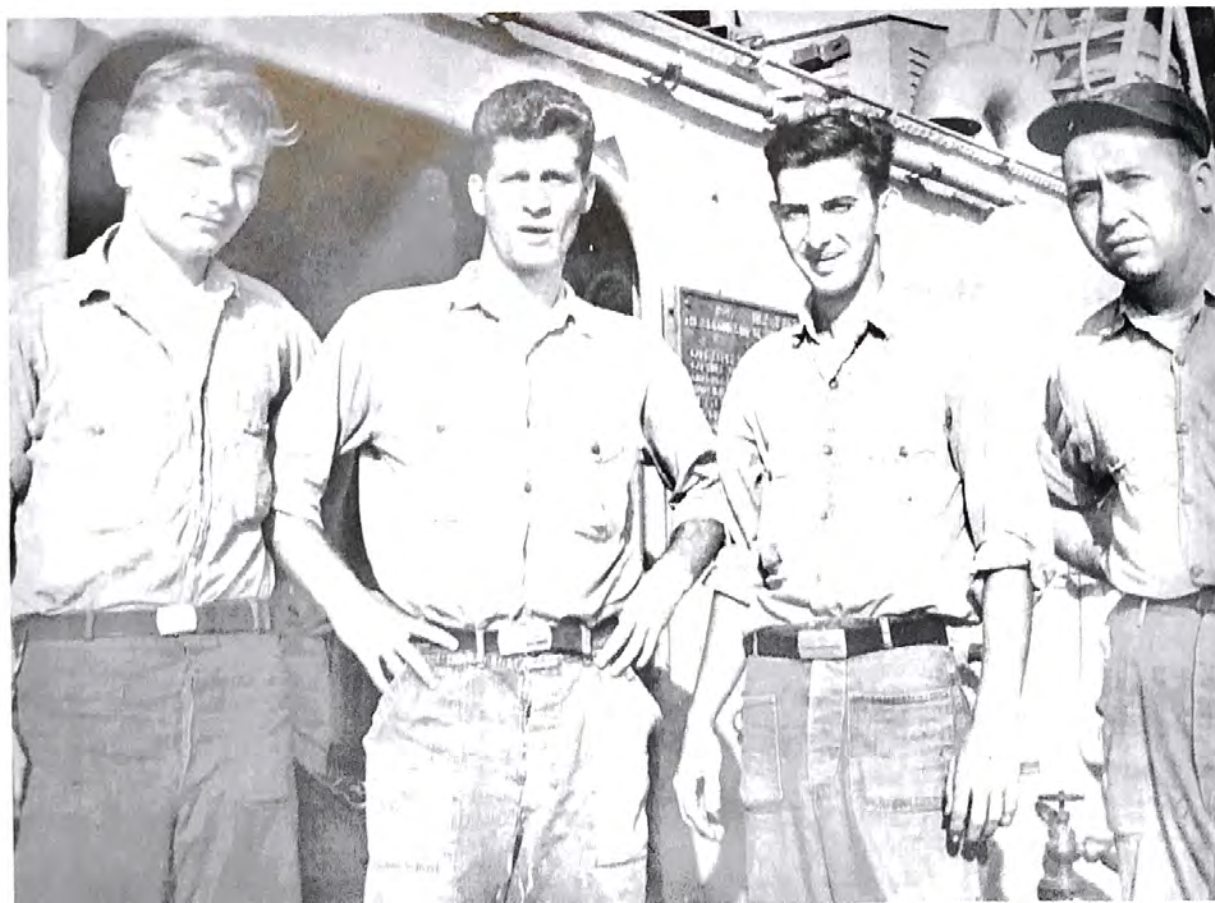
SIGNALMEN



QUARTERMASTERS

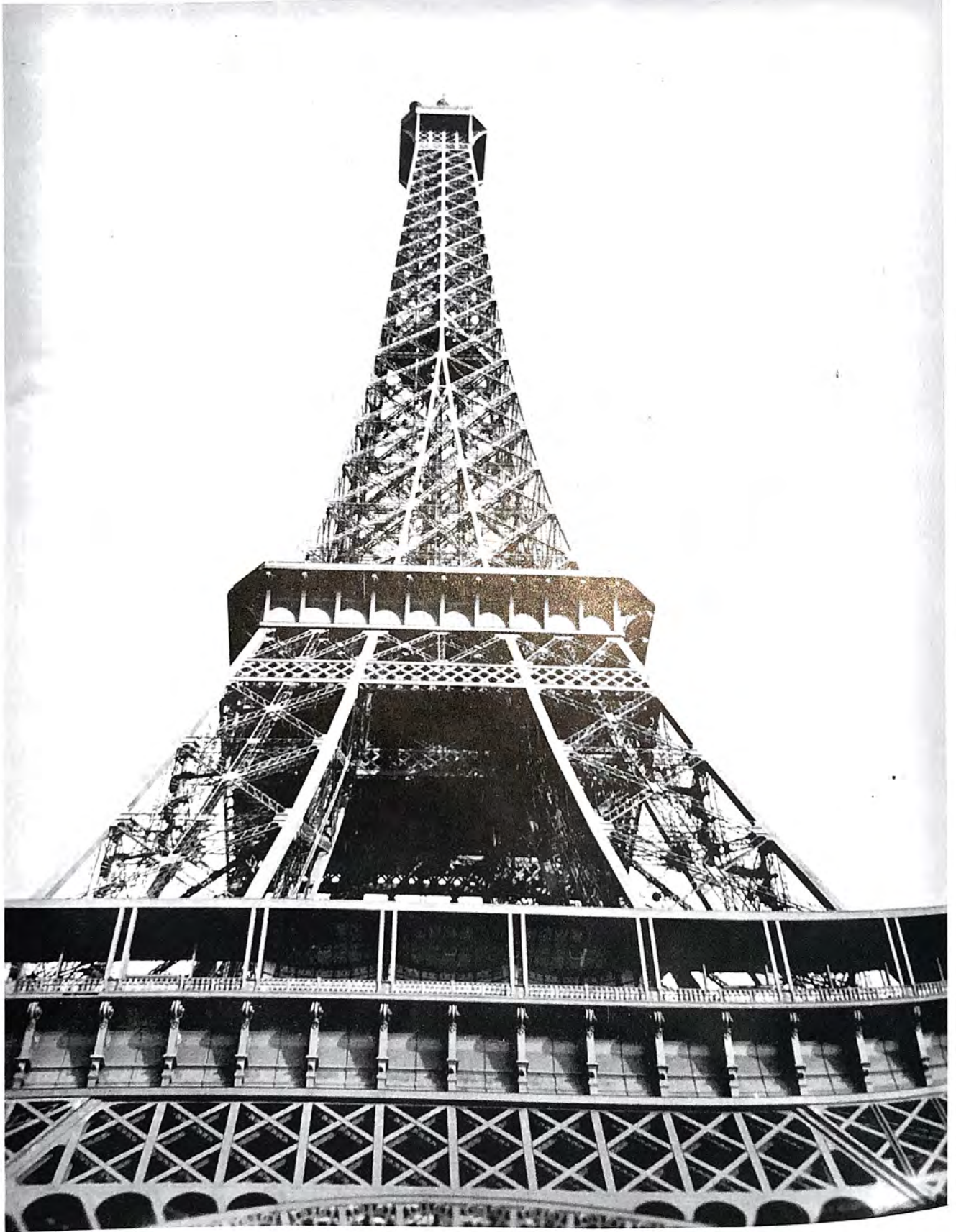
Front Row, L TO R: DAVENPORT SMSN, BLACKSTOCK SM1.
Second Row: BOWDEN QM1.
Third Row: COX QM2, FAULKNER SM3, HOLLER QM2, O'DANIELS QM3.
Fourth Row: KROEGER SMSN, FERRULLO SMSN, NELSON SMSN.
Not Pictured: BOSTIC SN.

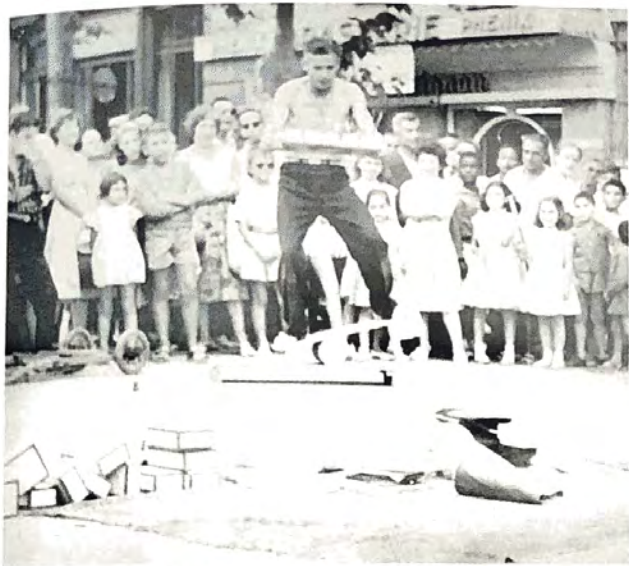
YEOMEN



"O" DIVISION

FRANCE

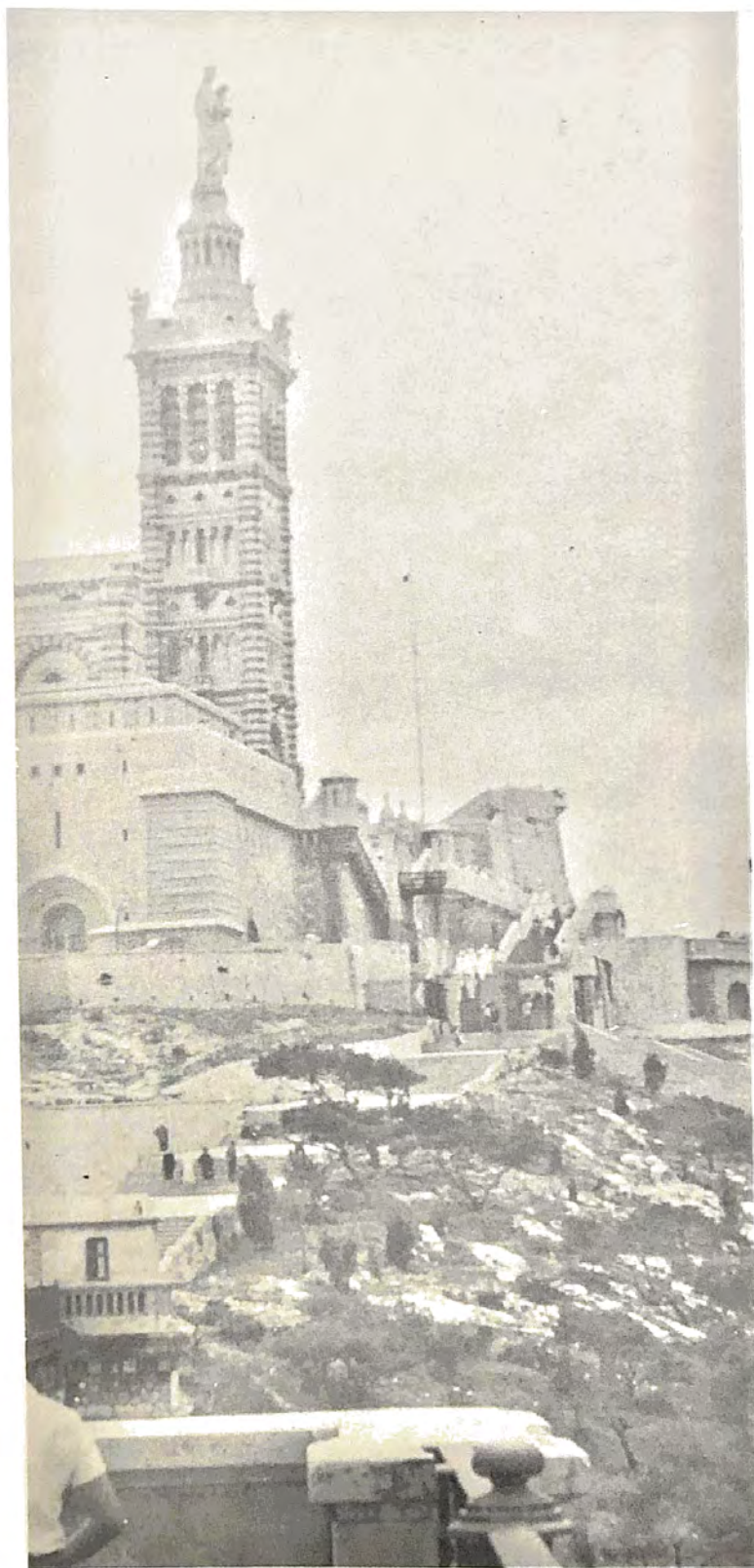




STREET SHOW — MARSEILLES



OUTDOOR DINING — FRENCH RIVIERA



NOTRE DAME DE LA GARDE — MARSEILLES

SAN RAPHAEL (PARIS INCLUDED)

On the morning of 28 October 1959 we found the famous French Riviera stretched out before us as we dropped anchor in the harbor of San Raphael, France.

The mountainous backdrop provided unlimited opportunities for the tour-minded sailors as we travelled by bus through the hills to the near-by cities of Cannes and Nice.

One of the high-lights of our visit to San Raphael was a scheduled tour to the fabulous city of Paris. An over-night train-ride, topped off by countless tours in and around the "City of Romance," made for four thoroughly enjoyable days.

In San Raphael, we found many typical French curio shops, restaurants and small clubs. The expensive casinos where so many famous European and American personalities vacation lined the streets of this ocean-side playground.

MARSEILLES

On 24 August 1959 we tied up in our first Mediterranean port, Marseilles, France.

This tremendous city of nearly one million inhabitants, once war-torn and ravaged, has now recovered its former importance as a major Mediterranean port.

A complete day of touring by motor coach took



CARVER AND UBIL FRENCH IT UP — MARSEILLES

us to all the most picturesque spots in and around Marseilles. Just one of such spots was the world-famous shrine, Notre Dame de la Garde. Equally beautiful on the interior as on the exterior, this religious landmark was a tour in itself.

In the evening we were left in the city to go our own way, practicing our French in our visits to the many open-air restaurants and colorful nite-clubs scattered along the crowded streets.

All in all, this busy French city offered everything we could ask in the way of a liberty port and as the French people say of Marseilles, "— noisy perhaps, but full of history and a charm of its own."



LET'S SWAP HATS, MATES — CANNES



ITALY

I T A L Y

GENOA

After our first sample of Mediterranean liberty the LAFEY steamed all to another country and brought us to our second liberty port, Genoa, Italy, where Christopher Columbus was born.

The city of Genoa old, but prosperous, is constructed in the form of a vast amphitheatre with its buildings scattered over a wide variety of heights. Its architecture varies from the mammoth Gothic-Mosque found in the ancient cathedral of San Lorenzo to small, rustic houses, inns and taverns as found in the quaint Bocca Dasse area.

The points of interest numbered many and each one seemed to surpass the other in beauty. Of course, the monument and home of Columbus was of the greatest interest to all of us and outstanding in beauty was the garden in Victory Square. In this colorful garden the three well-known ships of Columbus, Nina, Pinta and San Maria are artistically represented by means of flowers and plants.

However; all these historically interesting sights made up only a small part of our visit to Genoa.

There were the many sidewalk cafes, quaint taverns, the busy market place and in general many friendly people playing the perfect host and making for the LAFEY crew a very pleasant stay.

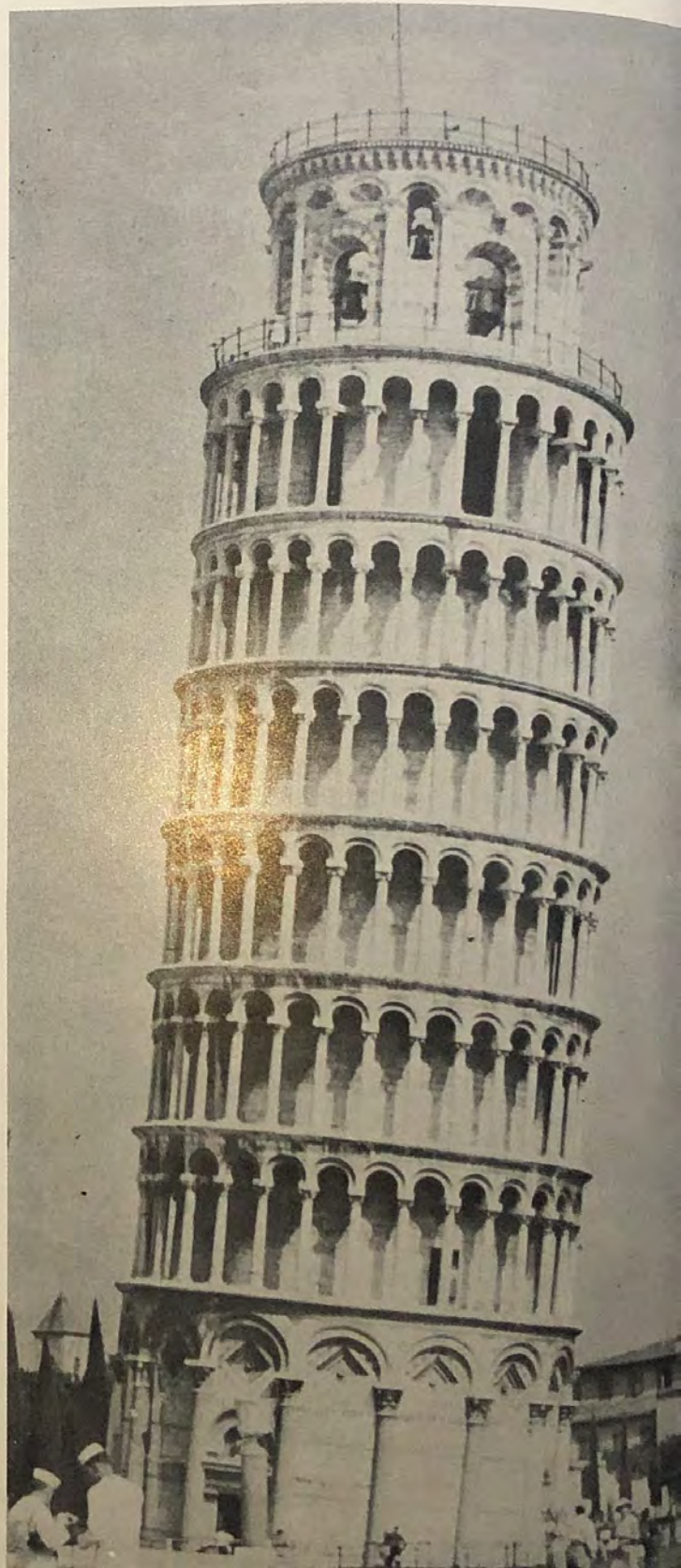


TOWER OF TRIUMPH — GENOA



PEOPLE TO PEOPLE PROGRAM

LEANING TOWER OF PISA



HORSE EATING

ITALIAN BUG JUICE





WHAT'S MY LINE??



CHRIS

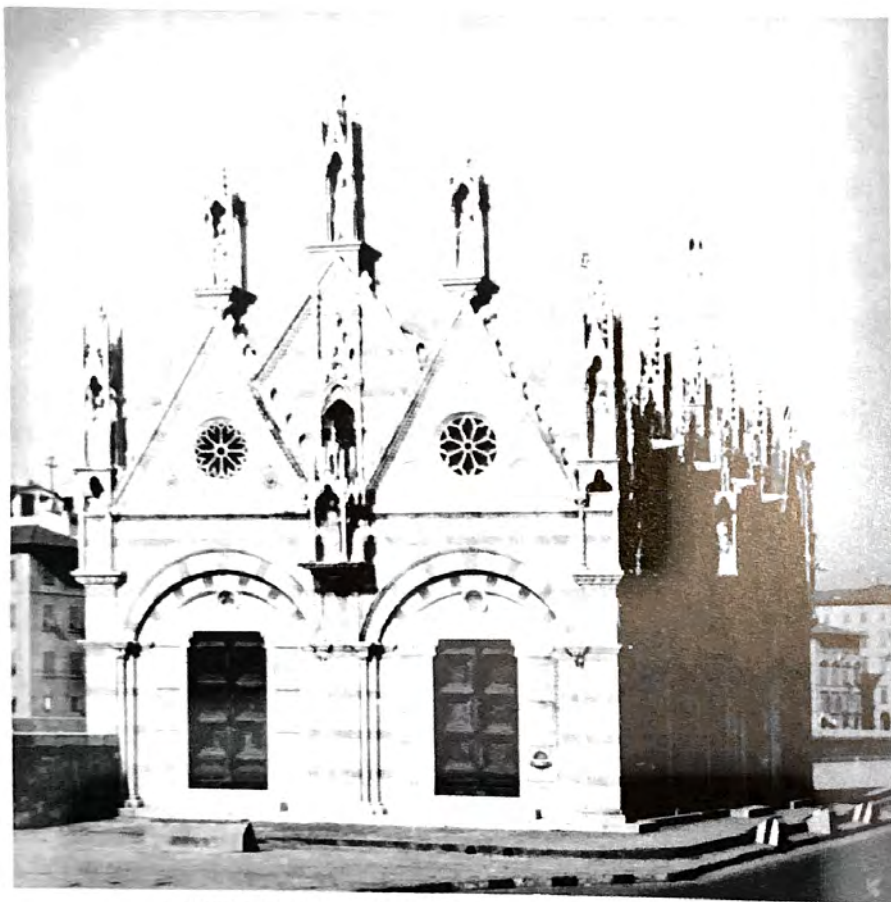


CIGARETTE GIRL — PISA



COFFEE — EUROPEAN STYLE

GENOA



CHURCH WHICH CHRISTOPHER COLUMBUS ATTENDED —



WHERE ARE WE?



GENOA

GREECE



SAMOS, GREECE

On the evening of October 15 we anchored in the rough waters off the Grecian Island of Samos. The lights of the small mountainous village winked a welcome to the LAFFEY as the friendly Greeks awaited the arrival of the first liberty boat.

Meanwhile, on the LAFFEY, the prospective liberty party paced the decks as the engineers worked in vain trying to repair the motor whale boat. Plenty of liberty, but no boat. Finally the word was passed that there could be no liberty tonight.

However; the next day brought sunshine and liberty to the LAFFEY and shortly after noon the first liberty boat cast off with its load of camera carrying sailors.

We found Samos, with its shops, restaurants and taverns to be unusually friendly and the surrounding mountain area both interesting and photographical.

Bicycles, horse-carts and mules provided novel transportation through the village and deep into the mountains as we learned the ways of the villagers and thoroughly enjoyed the friendly hospitality displayed by the Greek people.

PIRAEUS, GATEWAY TO ATHENS

On 21 September 1959, the LAFFEY sailed into the port of Piraeus on the Southern tip of Greece.

Piraeus lies only a few miles south of the ancient city of Athens. Various tours were scheduled by the tour officer enabling LAFFEY sailors to visit the historical city.

It was like tumbling through the pages of an ancient history book as we walked through the ruins of the Acropolis, Temple of Zeus, Olympic Amphitheatre and many other places of historical interest. Views of the Parthenon, Temple of Jupiter, and Mars Hill were permanently recorded as our busy cameras scanned over the stoney ruins which all Americans have read about but few have actually seen. Many LAFFEY sailors also paid a visit to the wine festival at Daphni. Here the men helped the Greeks to celebrate the tribute given to Bacchus, the God of Wine. Wine samples, 73 types in all, representing every Greek Island, were sampled and enjoyed.

The various clubs and restaurants of this once powerful city were also visited by the wide-eyed LAFFEY sailors. Many Drachmas were spent on souvenirs and gifts thus deepening the memory of our visit to this interesting Grecian City.

Other ports in Greece which were visited by the LAFFEY were Rhodes, Greece, and Samos, Greece. Samos was famous for its export of fine wines.



THE ACROPOLIS — ATHENS



PALACE GUARD — ATHENS



TOURING THE RUINS OF ACROPOLIS



THE MAIDENS



LIFE — SAMOS, GREECE



FIRE HOUSE FIVE, PLUS . . .



THE RIDE WAS ROUGH!



LONG DISTANCE, PLEASE!

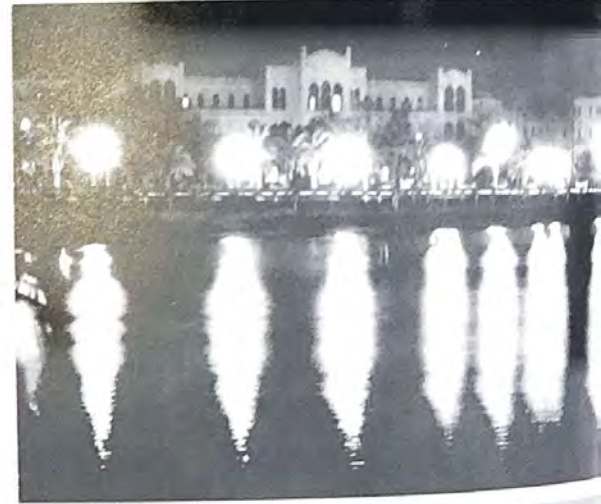


JOHN BULL'S

SCENES
OF...
TRIPOLITANIA



TRIPOLI, LIBYA





"HOLLYWOOD AND VINE"



RUINS OF THE SABRATHA



"ROCKEFELLER CENTER"



CAMEL MARKET

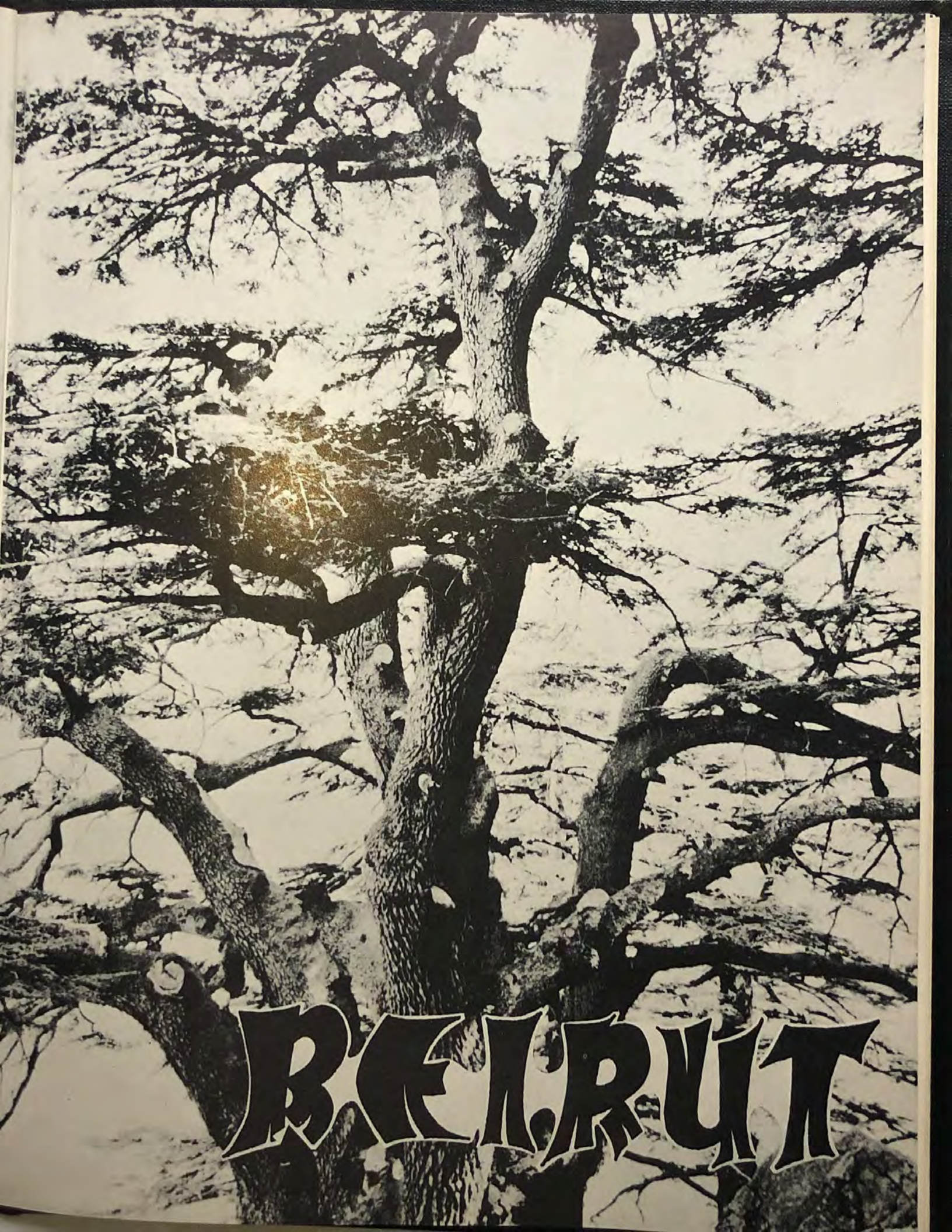
P A L M A



HARBOR SCENES



TOONERVILLE TROLLEY



BEIRUT



THE HOLY LAND



DISPLAY OF SOUVENIRS, BEIRUT



THE SHOE REPAIRMAN, BEIRUT



THE RUINS OF BAALBAK



RED SEA

On the fourteenth of December the LAFHEY transited the Suez Canal to spend approximately two months in the Red Sea and Persian Gulf Areas. After a brief fuel stop at Massawa, LAFHEY headed for the Persian Gulf to spend Christmas at Ras Tanura, Saudi Arabia. The crew was entertained by the American families who worked for the Arabian-American Oil Company and everyone had a wonderful time. Other ports visited were Bahrain, Kharg Island, Umm Said, Karachi and Aden. Although good liberty was limited, the crew enjoyed beach parties and softball games at Bahrain and Kharg Island and they learned much about the life and ways of the people in these far off lands. Leaving Karachi on the twenty-eighth of January LAFHEY headed westward on the first leg of her 10,000 mile trip homeward.

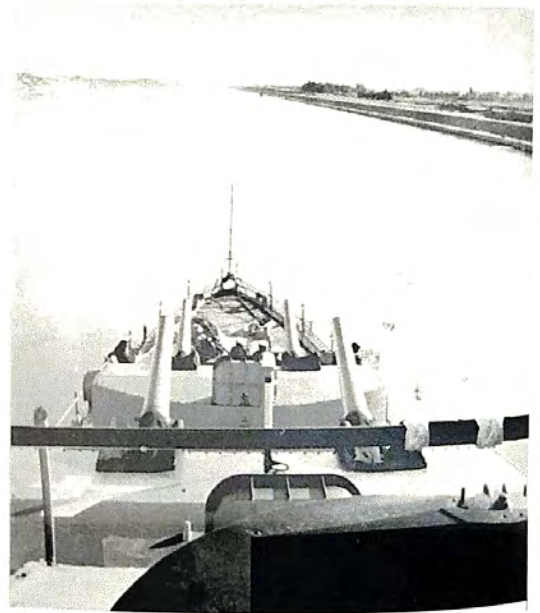
PERSIAN GULF



ANOTHER ATHLETIC PARTY



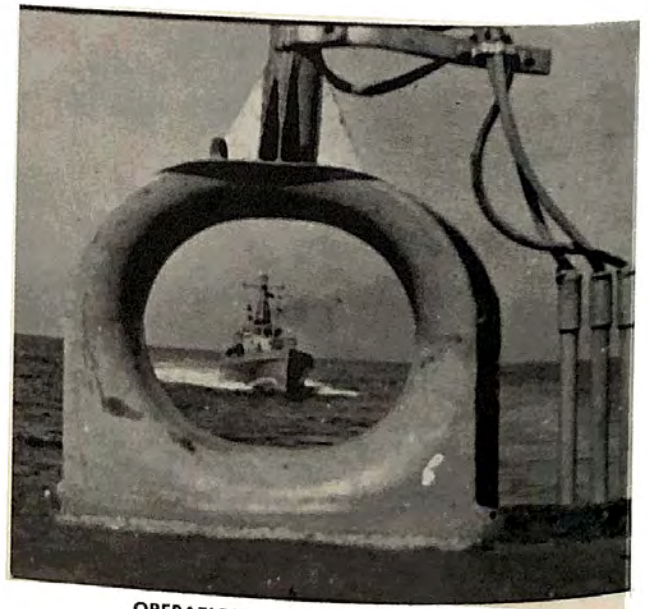
FUELING AT SCENIC MASSAWA, ERITREA



JOURNEY THROUGH THE SUEZ CANAL



SANTA COMES TO SAUDI ARABIA



OPERATIONS WITH THE IRANIAN NAVY



"I'LL MAKE YOU A SPECIAL PRICE"
PORT SUEZ, EGYPT



ADEN "BY THE SEA"



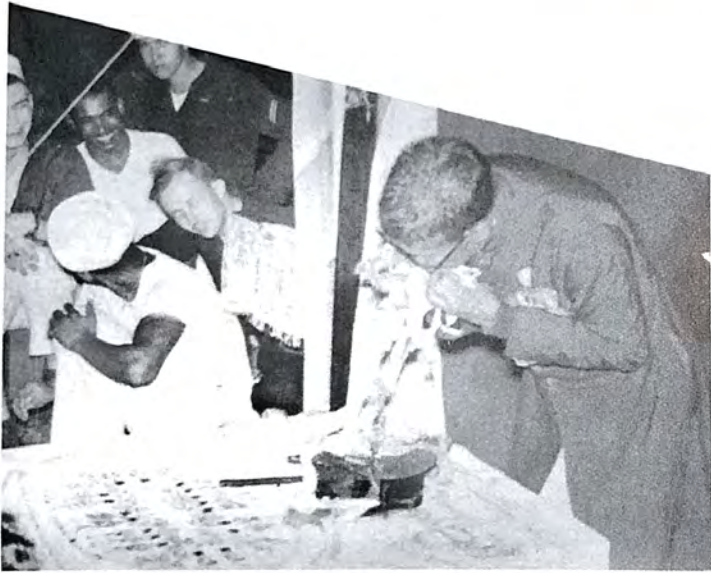
TRAFFIC JAM
KARACHI, PAKISTAN



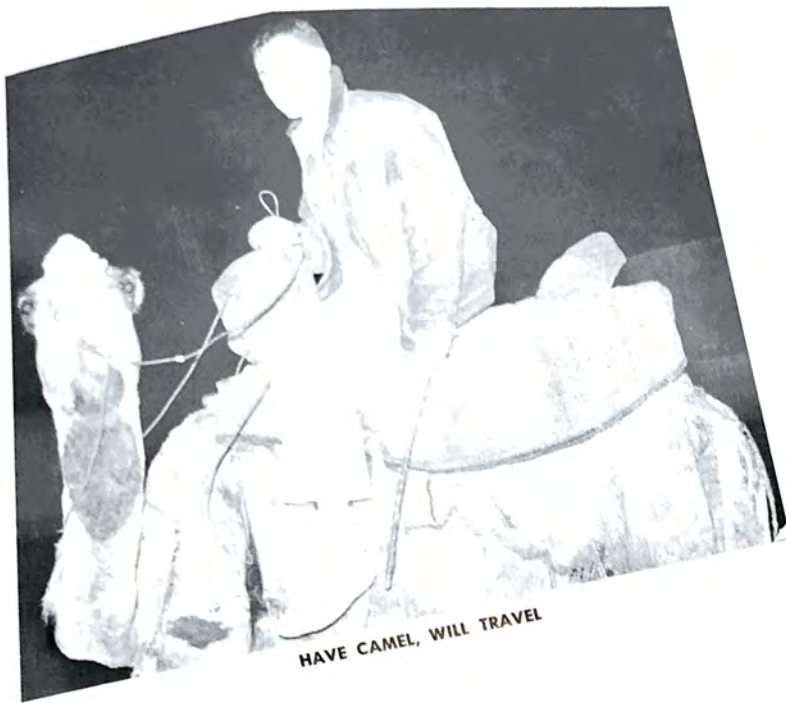
BUM BOATS ARE ACOMIN'
PORT SUEZ, EGYPT



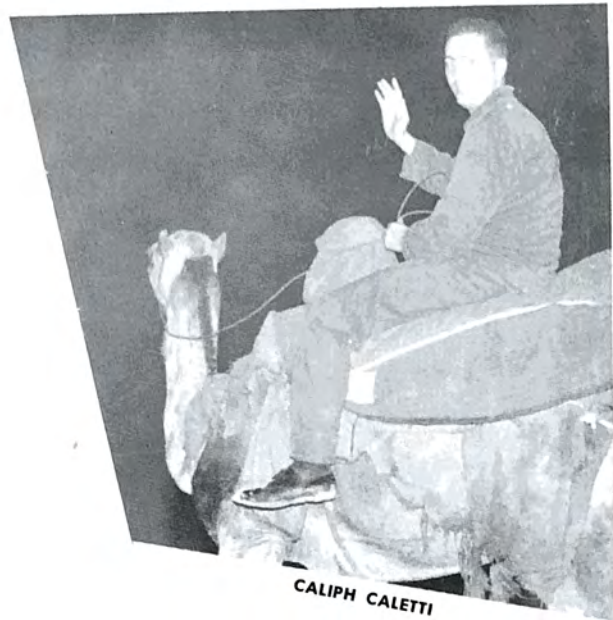
ROYALTY ON THE LAFFEY
RAS TANURA, SAUDI ARABIA



KARACHI, ENTERTAINMENT FROM FIRE EATERS TO COBRAS.



HAVE CAMEL, WILL TRAVEL



CALIPH CALETTI

TURTLE EGG HUNT



TOURING KARACHI, PAKISTAN
SEE WHAT HAPPEN!



ARABIAN NIGHTS

AN ARABIAN CHRISTMAS AND NEWYEAR

AN ARABIAN CHRISTMAS

By R. A. Bramblett, SN, USN

We were moored in Arabia riding at high tide,
The waves in the harbor gently brushed by our side;
It seemed sort of odd, with the desert so near,
That even in Arabia St. Nick would soon be here;
As I lay in my rack, in my skivies so gray,
I thought of tomorrow which would be Christmas Day;
I was nearly asleep when I heard all this racket,
I sprung from my rack and grabbed my dungaree jacket;
I flew up the ladder and ran through the mess deck,
And ran into the steam line nearly breaking my neck;
But I arose with a bound and continued on my way,
Up the steam line ladder and down the long passageway;
All the noise was coming from the fire room scuttle,
And half-dressed sailors stood by in a huddle;
I ran to the hatch to see what was shaking,
And to find who it was that had caused me to awaken;
Way down on the deck lay a little fat guy,
He was covered with soot but had a twinkle in his eye;
I heard his laugh and knew it was St. Nick's,
But how in the hell did he get in such a fix?
His beard was all burned and his suit as black as coal,
So I questioned a snipe coming out of the hole;
I was right in my guess, it was Santa all right,
He had come to the LAFFEY on this most Holy Night;
With his big round belly and his pack on his back,
He had slid all the way down number one stack;
I guess Santa Claus would have made it real soft,
If he hadn't picked the stack where the boiler was lit off;
So he came up the ladder with his pack on his back,
And I started on down to get in my rack;
Then over the squawk box I heard Santa exclaim,
The Hell with Saudi Arabia and this whole Christmas game!

MERRY CHRISTMAS

AND

HAPPY NEW YEAR

FIRST LOG ENTRY 1960

How bright the stars, how calm the sea,
As LAFFEY rides serene;
This new born day, in ancient lands,
Off Island of Bahrein.

In Sitra Bay with mud and sand,
And starboard anchor set;
Is forty feet of H2O,
Beneath this quarterdeck.

Sitra Light bears 091,
South Range logs two oh seven;
Middleground floats at two one five,
Under the star filled heavens.

While whistles blow and sirens wail,
To usher in the year;
We set Mod Yoke, below the deck,
Our ship to keep secure.

The foreign merchants ply their trade,
Past anchored DUXBURY BAY;
The skipper who, we understand,
Is now S-O-P-A.

The watch wears on, a year begins,
With hopes of peace for all;
And that's our job, this stout DD,
Unrest and war forestall.

L. A. Higgins, LT., USN



GUESTS AND ORPHANS

Among sight-seeing and all the many other things associated with a Mediterranean cruise such as ours, we were fortunately able to play host to many visitors and show them a few things about a Navy destroyer.

Our role of good-will ambassadors introduced us to many friendly people and covered a wide range of nationalities. We taught of our ship and in turn learned of their country and habits.

Whether playing Santa Claus to some worthy orphan children in Piraeus, Greece or entertaining our friendly visitors of the Aramco Oil Company in Ras Tanura, S. A., it was both interesting and rewarding to extend our most cordial hospitality to our many friends in these faraway lands.



SAMOS, GREECE



TRIPOLI, LIBIA



PIRAEUS, GREECE



PIRAEUS, GREECE



PIRAEUS, GREECE



PIRAEUS, GREECE



TRIPOLI, LIBIA



PIRAEUS, GREECE



RAS TANURA, SAUDI, ARABIA

NOW
REVEILLE
REVEILLE
REVEILLE



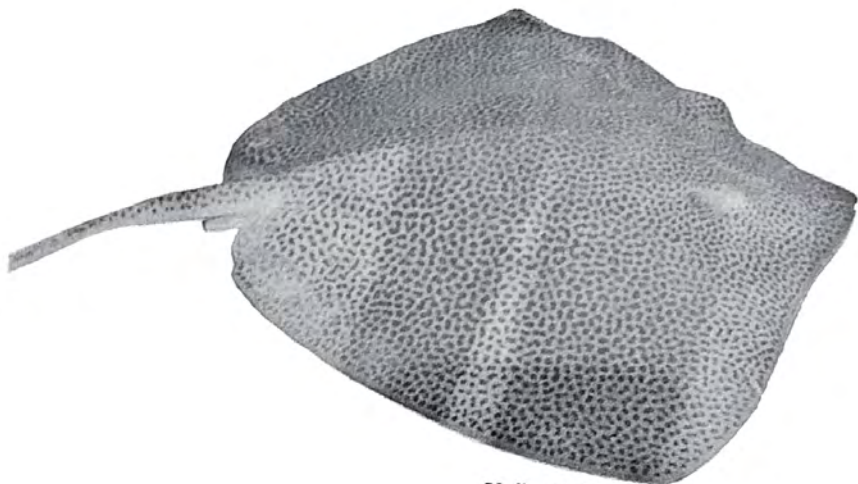
GRAND CHAMP

FRANK E. CAMPBELL
BTJ



CAMPBELL WITH HIS 20 lb. BONITA

THE ANGLERS



50 lb. RAY

Throughout the cruise, a cash prize of \$5.00 was awarded to the fisherman who caught the largest fish in each port or during fish call at sea.

Competition was at its peak while in the Persian Gulf area.



35 lb. SHARK



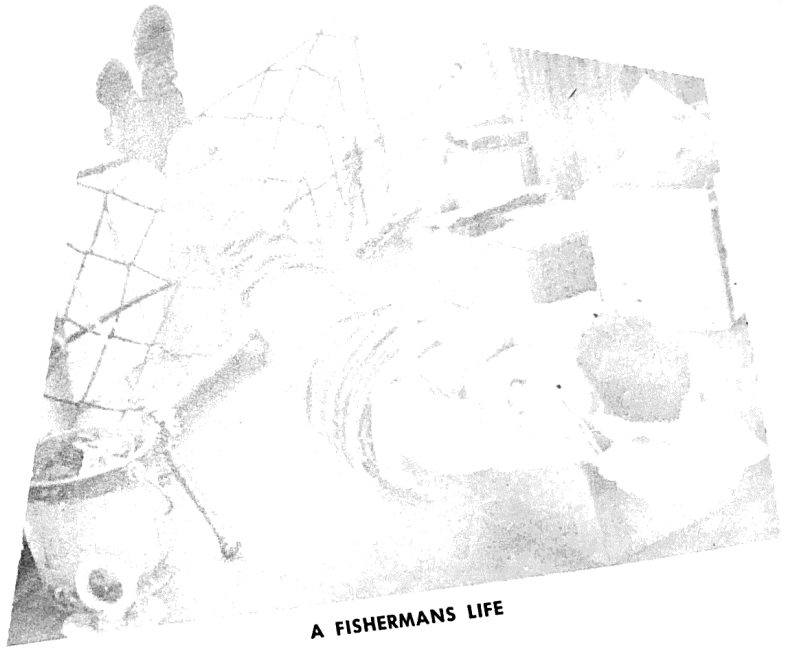
JOHNSON



FISH CALL AT SEA



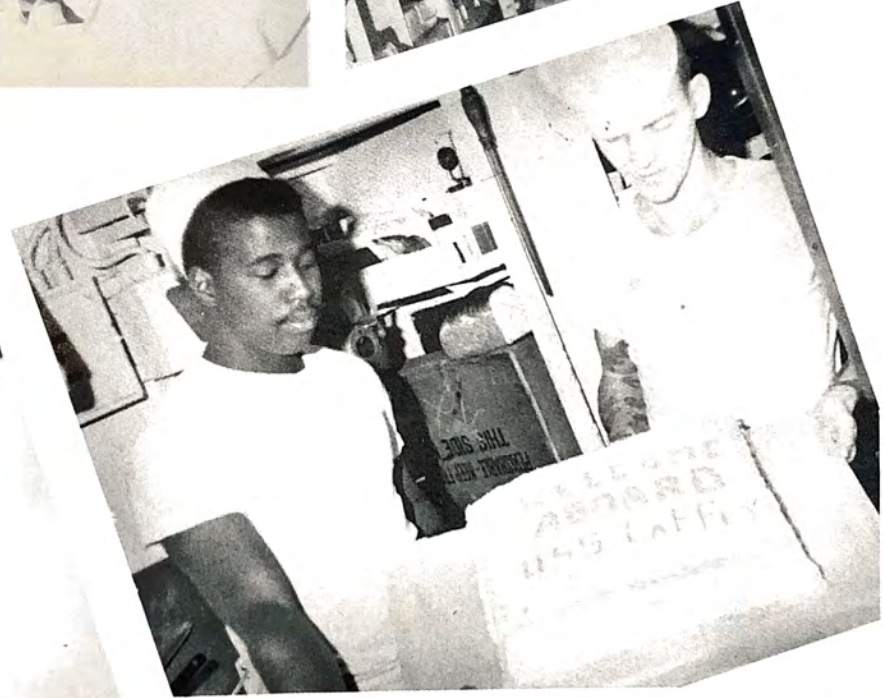
THE COMPLACENT ANGLER



A FISHERMANS LIFE



CAPTAIN PRESENTING LYDA





BIQUE



SKRIPKO

PROUD CATCHES



A GOOD SECOND



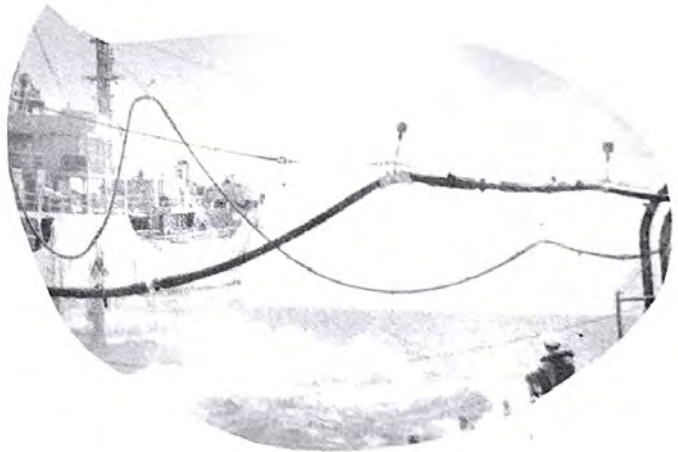
REES



Fuel Oil Consumed
2,069,270 Gallons

~~~~~

Total Miles Steamed  
37,916 Miles



# TRANSFER AT SEA



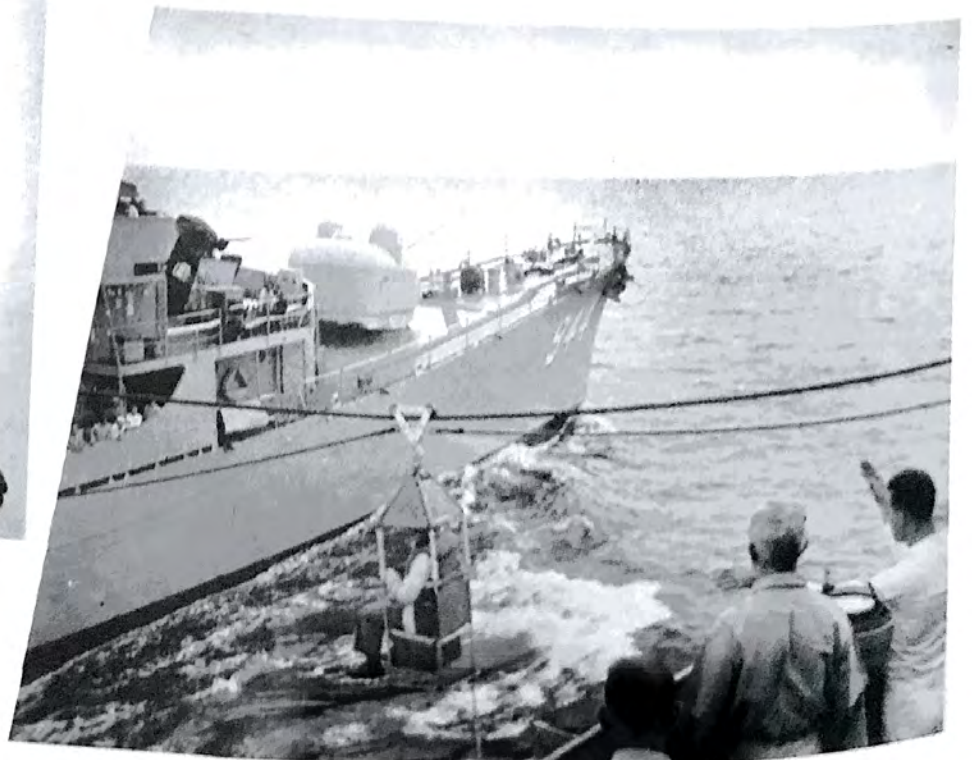
GOOD OLD MAIL CALL  
WHERE'S LUGO



RIDING THE LINE



AN ANGEL FROM HEAVEN



TRANSFER TO MULLINIX



MID-SHIPS HI-LINE STATION

## REPLENISHING

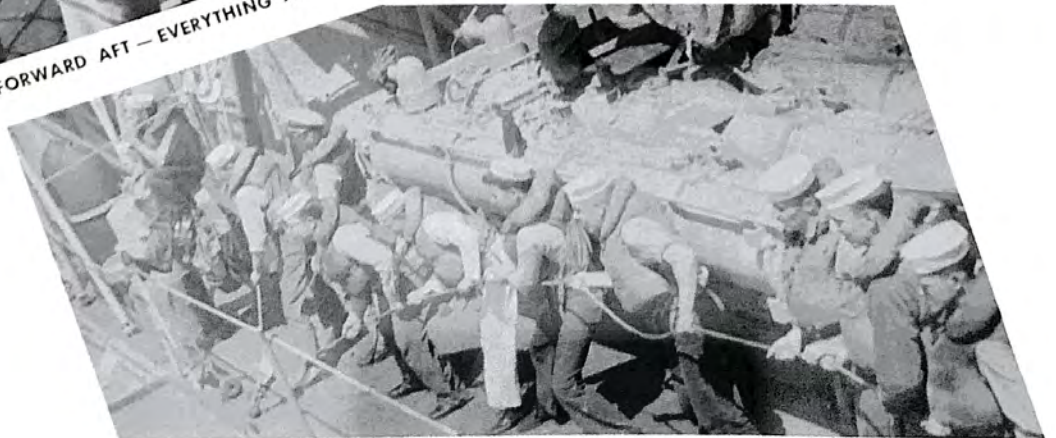
The LAFLEY replenished at sea three times, for a total of approx. 100 tons.



EVERYTHING FORWARD AFT — EVERYTHING AFT FORWARD

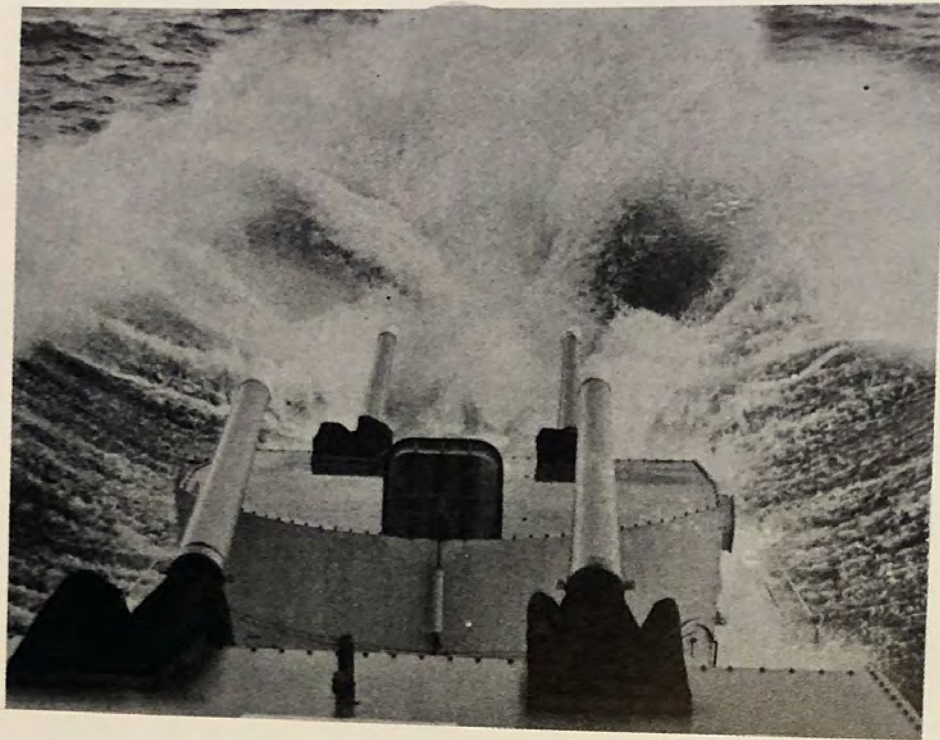


FORWARD HI-LINE STATION



KEEP THE SLACK OUT

# HEAVY SEAS



and **OFTEN REPAIRS**



**FOLLOW**

# INSPECTIONS



CAPTAINS PERSONNEL INSPECTION



COMMODORES INSPECTION  
LEGHORN, ITALY



INSPECTION OF HONOR GUARD BY U. S. AMBASSADOR TO LEBANON

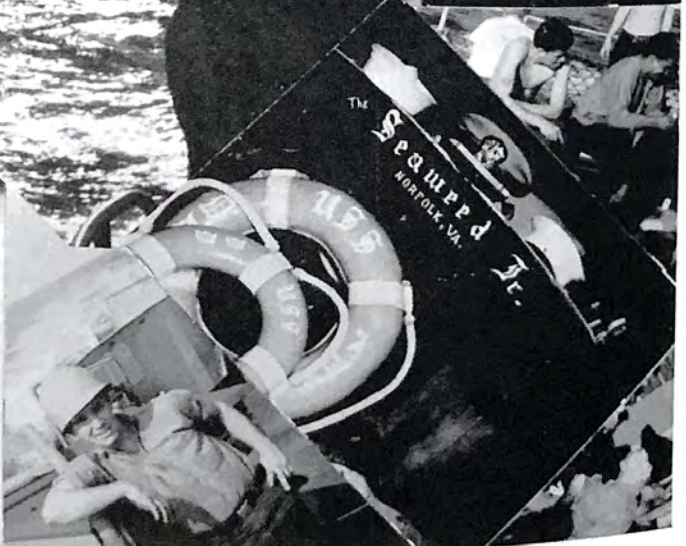


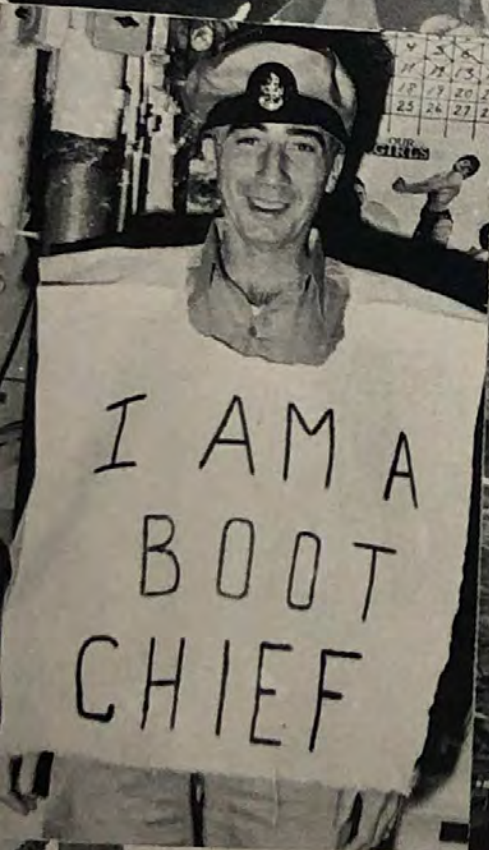
INSPECTION — FRENCH STYLE



PIPING  
GOVERNOR OF SAMOS, GREECE







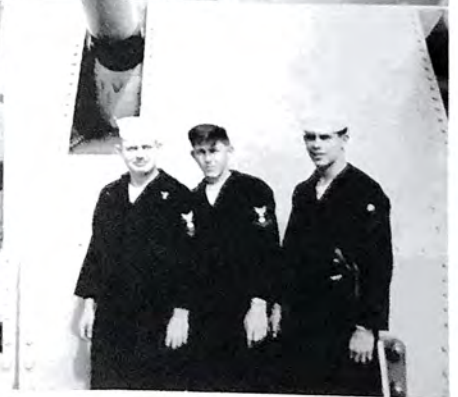
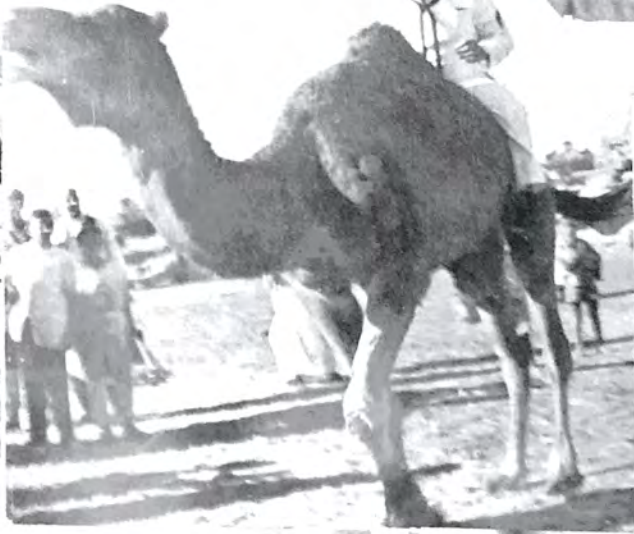


"SHORT TIMERS"



CHEST OUT - STOMACH IN ???







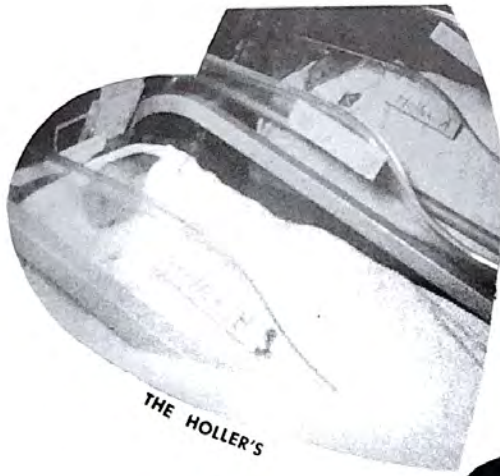
## STORK CLUB

### "New Dads"

|                  |                |
|------------------|----------------|
| LT. BAREISS      | A. L. JONES    |
| R. E. BIQUE      | T. G. KARLIE   |
| E. A. CARLEY     | B. E. MORRIS   |
| L. R. COX        | K. O. MORTON   |
| C. L. EICHSTEADT | J. L. O'DANIEL |
| R. W. FLANARY    | G. W. SLOAN    |
| M. G. HOLLER     | S. C. SHOOP    |
| R. I. JERVIS     | R. E. ZOLL     |

# GREETINGS FATHERS

Let it be known that the above list of names are of those proud sailors who have become fathers on this cruise, aboard the U.S.S. LAFFEY (DD-724)



THE HOLLER'S



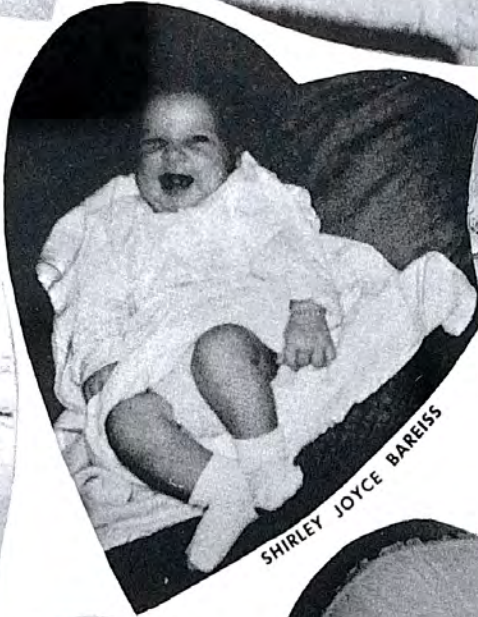
THE BIQUE'S



TERRY LYNN KARLIE



KARL O MORTON, JR.



SHIRLEY JOYCE BAREISS



CATHEIENE ELAINE SLOAN



JO ANN ZOLL



DAVID J. O'DANIEL



MARK ANTHONY CARLEY



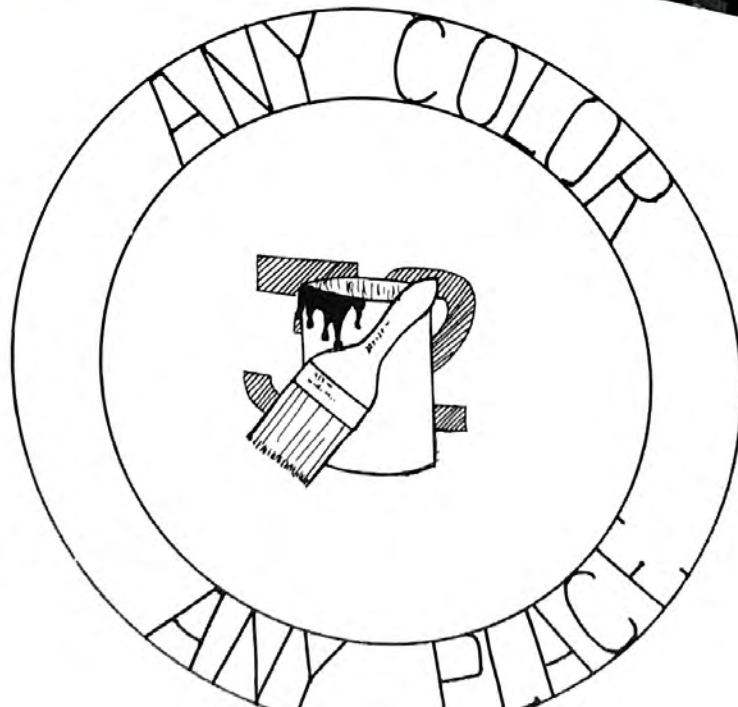
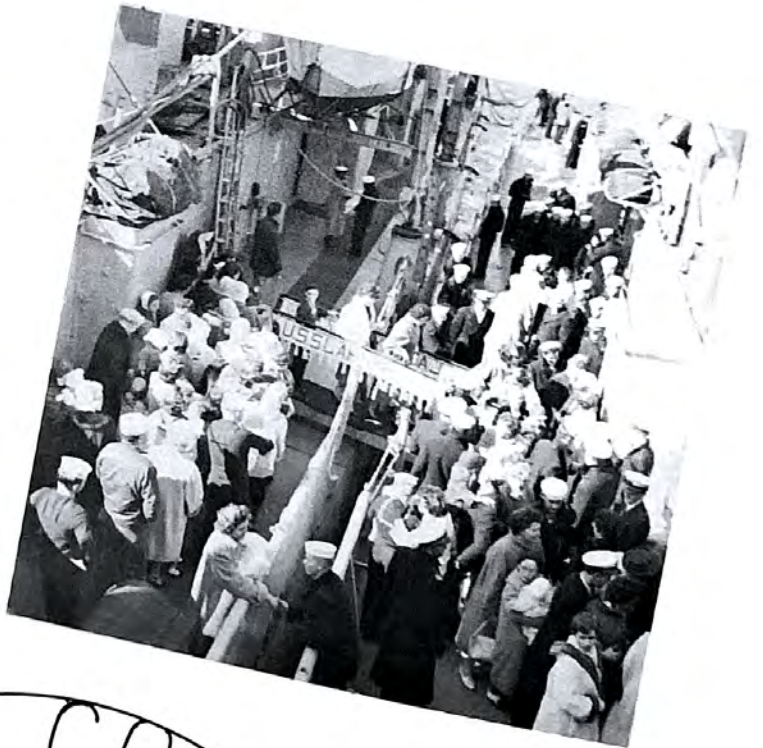
TIMOTHY SHAUN JONES



BRIAN TRACY MORRIS



**HOME  
AT  
LAST**



# SHIP'S ROSTER

ABER, F. L., SN  
 BROOKLYN, N. Y.  
 ABRAMS, C., RDSN  
 CAMBRIDGE, OHIO  
 ADAMS, A. E., ET1  
 PORTSMOUTH, VA.  
 ADAMSON, D. D., MMFN  
 NEWMAN, ILL.  
 ALBRIGHT, J. J., JR., LCDR.  
 NASHVILLE, TENN.  
 ALEXANDER, J. S. P., RDSN  
 ATLANTA, GA.  
 ANDERSON, R. R., MMC  
 NORFOLK, VA.  
 ANDRES, J. A., RDC  
 BROOKLINE, MASS.  
 ANTHONY, A. R., SN  
 CLEVELAND, OHIO  
 BACCUS, L. (n) JR., FN  
 BIRMINGHAM, ALA.  
 BAVARO, T. B.  
 FAYETTEVILLE, N. C.  
 BENNETT, C. T., CSC  
 SILVER SPRINGS, MD.  
 BETTINGER, J. C., SN  
 BARABOO, WIS.  
 BICE, M. L., TM3  
 ROME, GA.  
 BIQUE, R. E., MM1  
 JACKSONVILLE, FLA.  
 BLACKSTOCK, W. S., SMT  
 NORFOLK, VA.  
 BLAKE, H. A., IC3  
 HAVERTOWN, PA.  
 BOARDMAN, D. E., FN  
 ELMWOOD, CONN.  
 BOBICK, M. J., GMSN  
 UNIONTOWN, PA.  
 BORELAND, L. W., FT3  
 LAKE ORION, MICH.  
 BOSCOE, J. M., SN  
 FALL RIVER, MASS.  
 BOSTIC, D. L., SN  
 RAINELLE, W. VA.  
 BOWDEN, D. W., QM1  
 WICHITA, KANS.  
 BRAMBLETT, R. L., SOGSN  
 HANNIBAL, MO.  
 BRAUND, W. K., SK3  
 WESTFIELD, N. Y.  
 BROOKS, H. C., EM3  
 NASHUA, N. H.  
 BROWN, C. E., III, LTJG.  
 PENFIELD, ILL.  
 BROWN, C. G., SN  
 PALM BEACH, FLA.  
 BROWN, J. E., JR., SN  
 PETERSBURG, VA.  
 BROWN, J. K., FN  
 LOUISVILLE, KY.  
 BROWN, J. R., SN  
 HOUSTON, TEXAS  
 BROWNE, T. M., LTJG.  
 CORAL GABLES, FLA.  
 BURPEE, A. B., SOG3  
 BELLINGHAM, WASH.  
 BYRD, H. H., BT3  
 KNOXVILLE, TENN.  
 CALETTI, C. E., SN  
 LODI, N. J.  
 CAMPBELL, F. E., BT1  
 EMPIRE, ALABAMA  
 CARLEY, E. A., MM1  
 NORTH RIDGEVILLE, OHIO  
 CARTER, G. K., MMFN  
 ESCANABA, MICH.  
 CARVER, J. P., BMSN  
 PALESTINE, ILL.  
 CAVANAUGH, L. B., JR., SN  
 BORDEN, IND.  
 CHANDLER, C. M., FN  
 DETROIT, MICH.  
 CHASE, P. D., MM2  
 WAKERVILLE, MICH.  
 CLARK, J. (n), SH3  
 PORTSMOUTH, VA.  
 CLARK, H. L., CDR.  
 NORFOLK, VA.  
 CLARK, R. A., SN  
 JERSEY SHORE, PENN.  
 CLASS, R. F., FN  
 LOCKPORT, N. Y.  
 COLLIER, H. P., SOGSN  
 BLOOMINGTON, IND.  
 COLLINS, J. W., FT1  
 ROME, GA.  
 COMBS, P. D., EN3  
 KENTUCKY  
 COMMIRE, C. J., SO2  
 SARASOTA, FLA.  
 CONKLE, F. C., SN  
 RICHMOND, VA.  
 COOKE, E. R., FN  
 SPARTA, MICH.  
 COVINGTON, Z. C., TN  
 NORFOLK, VA.  
 COX, C. R., QM2  
 PORTSMOUTH, VA.  
 COX, L. R., BM3  
 NORFOLK, VA.  
 CRABB, L. J., SOG3  
 LINCOLN, NEB.  
 CRAVER, G. W., FN  
 WINSTON-SALEM, N. C.  
 CROSE, W. C., FN  
 INDIANAPOLIS, IND.  
 CRYSEL, C. W., SN  
 WARREN, OHIO  
 DAVENPORT, M. J., SMSN  
 ROPER, N. C.  
 DAVIS, C. (N), SN  
 RALEIGH, N. C.  
 DAVIS, J. A., MMFN  
 BUSH, LA.  
 DENNEN, J. R., LTJG.  
 PRINCETON, N. J.  
 DEVLIN, J. F., FN  
 MANCHESTER, N. H.  
 DIDSZUHN, P. (N), FN  
 COLUMBUS, OHIO  
 DOLL, J. R., RMSN  
 ST. LOUIS, MO.  
 DOLL, R. R., BMC  
 NORFOLK, VA.  
 DRISCOLL, J., RM1  
 ROCHESTER, N. Y.  
 EBERT, D. A., BMSN  
 BROOKLYN, N. Y.  
 EDWARDS, C. F., BT3  
 BROADALBIN, N. Y.  
 EDWARDS, "R", "A", SH1  
 HICKMAN, KY.  
 EICHSTEADT, C. L., MM3  
 WEST BEND, WIS.  
 ELLIS, G. L., FN  
 RUMSEY, KY.  
 ELSBERRY, R. L., MM3  
 GRAND JUNCTION, COLO.  
 FAULKNER, G. F., SM3  
 HATTIESBURG, MISS.  
 FERRULLO, P., SMSN  
 NIXON, N. J.  
 FLANARY, R. W., RDSN  
 PENNINGTON GAP, VA.  
 FORD, J. A., ET3  
 PHILADELPHIA, PA.  
 FULLER, D. E., SN  
 GREEN FIELD, OHIO  
 GARBINSKEY, W. L., FTC  
 SILVER CITY, MICH.  
 GEE, H. A., SD2  
 NORFOLK, VA.  
 GIOVE, R. (N), JR., SOG3  
 BALTIMORE, MD.  
 GOODE, R. E., LTJG.  
 OKLAHOMA CITY, OKLA.  
 GOWENS, K. D., FTSN  
 PHOENIX, ARIZ.  
 GREEN, W. D., ETSA  
 HIGH POINT, N. C.  
 GREEN, E. E., EM2  
 TOPEKA, KANS.  
 GREEN, T. W., BT3  
 STOCKBRIDGE, VT.  
 GRIFFITH, V. (N), JR., CS3  
 BIG CREEK, W. VA.  
 GUARENTE, D. (N), RMSN  
 NATICK, MASS.  
 HALL, L. (N), GM1  
 GRACEVILLE, FLA.  
 HANKINS, H. P., MM1  
 OAK GROVE, LA.  
 HARRIS, P. A., SN  
 CHARLOTTESVILLE, VA.  
 HAWTHORNE, R. R., ENS.  
 MARLTON, N. J.  
 HEFLIN, H. T., FA  
 HORSE BRANCH, KY.  
 HENDERSON, R. W., MRFN  
 CHINA LAKE, CALIF.  
 HENDERSON, S. H., SN  
 WHATLEY, ALA.  
 HESTER, C. R., SK3  
 RED BAY, ALA.  
 HIEBERT, R. L., RDSN  
 HOUSTON, TEXAS  
 HIGGINS, L. A., LT.  
 NORFOLK, VA.  
 HJERLEID, S. O., JR., FT2  
 SARATOGA, WYO.  
 HOBBS, N. C., SN  
 BRUNSWICK, GA.  
 HOLLOMAN, F. W., LTJG.  
 NORFOLK, VA.  
 HOLLER, M. G., QM2  
 ROCHESTER, N. Y.  
 HORTON, H. K., SN  
 DUBLIN, VA.  
 HOSKINS, E., SN  
 MIDDLESBORO, KY.  
 HOWELL, E. E., BM1  
 WAUCHULA, FLA.  
 HUDAK, J., FA  
 GREENSBURG, PA.  
 HUDDLESON, R. R., SKC  
 SIDELL, ILL.  
 JAGDHUBER, R. L., ENFN  
 BALTIMORE, MD.  
 JANS, S. A., FN  
 CLARENDON HILLS, ILL.  
 JERVIS, R. I., BM2  
 NORFOLK, VA.  
 JOHNSON, H. B., JR., BT1  
 McCALL, FLA.  
 JONES, A. L., GM3  
 ROANOKE, VA.  
 JORDAN, L. H., EM3  
 ELLENTON, FLA.  
 KARAS, R. E., LTJG.  
 NORFOLK, VA.  
 KARLIE, T. G., SN  
 NORFOLK, VA.  
 KAUS, R. W., FN  
 VERONA, PA.  
 KNIPPENBURG, R. E., EM2  
 MIDLAND, MD.  
 KONOPKA, E. S., FT3  
 JERSEY CITY, N. J.  
 KOPSYWA, H. (N), JR., FA  
 BILOXI, MISS.  
 KROEGER, R. E., SMSN  
 LIMA, OHIO  
 LABRIE, C. E., SH3  
 YOUNGSTOWN, OHIO  
 LAMPKIN, L. E., RM3  
 CHIDESTER, ARK.  
 LANNEN, R. W. W., FTSN  
 PHILIPSBURG, PA.  
 LARKIN, J. E., CS2  
 MONTICELLO, ARK.  
 LAROS, R. V., JR., RDSN  
 MILLVILLE, N. J.  
 LARSEN, R. A., SN  
 DULUTH, MINN.  
 LAVOUN, G. C., FN  
 NEW YORK CITY, N. Y.  
 LEHMAN, C. I., DC3  
 PHILADELPHIA, PA.  
 LESSARD, A., SN  
 MINNEAPOLIS, MINN.  
 LEVEY, G. D., LTJG.  
 CANTON, MASS.  
 LINVILLE, C. L., ET3  
 COLLINWOOD, TENN.  
 LIPPI, A. R., RMSN  
 BRONX, N. Y.,  
 LONDKA, A. G., GM3  
 DETROIT, MICH.  
 LONG, L. F., BT3  
 OHIO CITY, OHIO  
 LUGO, A. (N), TERM3  
 NEW YORK, N. Y.  
 LUSK, H. F., GM2  
 JOHNSON CITY, TENN.  
 LYDA, C. V., TM2  
 ASHEVILLE, N. C.  
 MacCASKILL, J. R., FN  
 ROCKAWAY, N. Y.  
 MARCHANT, C. E., RM3  
 TIPTON, MO.  
 MARTIN, B. F., RMSN  
 COVINGTON, VA.  
 MARTIN, C. W., MM2  
 ATMORE, ALA.  
 MARTIN, G. W., EN3  
 HYATTSVILLE, MD.  
 McBRINN, J. R., RDSN  
 JERSEY CITY, N. J.  
 McCALL, W. A., FN  
 MONTGOMERY, IND.  
 McCOY, E. A., FTSN  
 BALTIMORE, MD.  
 McLEOD, R. H., ENS.  
 MONTPELIER, VT.  
 MEDLEY, R. (N), CSSN  
 BEACON, N. Y.  
 MENDOZA, M. C., TN  
 SUAL PANGASINAN, P. I.  
 MILLER, M. E., RD3  
 JOHNSTOWN, PA.  
 MILLER, T. C., FN  
 YORK, PA.  
 MINITER, M. J., RDSN  
 NEW YORK CITY, N. Y.  
 MOLOWSKI, D. J., MMFN  
 YUKON, PA.  
 MONTGOMERY, C. P., ENS.  
 ARLINGTON, VA.  
 MOON, C. L., BTFN  
 SAN ANTONIO, TEXAS  
 MOREHOUSE, M. D., MM1  
 ROYAL CENTER, IND.  
 MORRIS, B. E., SN  
 PICKENS, S. C.  
 MORSE, T. J., SN  
 MANKATO, MINN.  
 MORTON, K. O., GM2  
 CLAY, W. VA.  
 MOSKIE, T. J., DK3  
 BROOKLYN, N. Y.  
 MOSS, J., CS1  
 DAYTONA BEACH, FLA.  
 MUGRIDGE, R. I., TM1  
 BOSTON, MASS.  
 MUMFORD, T. L., MM3  
 ELMFORD, N. Y.  
 MUNSON, L. R., BTC  
 NORFOLK, VA.  
 NELSON, V. A., SMSN  
 MITCHELL, S. D.  
 NEULEIB, N. D. C., SF1  
 GENESEO, ILL.  
 NEWLON, R. E., BM3  
 ESSEX, MD.  
 O'DANIEL, J. L., QM3  
 BELMONT, N. C.  
 O'NEAL, H. L., CS2  
 MIDWAY, FLA.  
 ODOM, A. E., PN1  
 LUMBERTON, N. C.  
 PAGLIEI, A. E., FN  
 LACKAWANNA, N. Y.  
 PAPALEO, J. M., SN  
 CLEVELAND, OHIO  
 PENDERSON, H., SN  
 AMCE, IOWA  
 PENDER, G., FN  
 ONTONAGON, MICH.  
 PENN, A. L., MM3  
 ALEXANDRIA, VA.  
 PEREZ, B. A., FN  
 PHILADELPHIA, PA.  
 PERRIN, J. B., FN  
 ROCHESTER, N. Y.  
 PETERSON, D. A., FTSN  
 PONTIAC, ILL.  
 PHELAN, R. D., MMFN  
 NORFOLK, VA.  
 PHELPS, T. C., EM2  
 ROANOKE RAPIDS, N. C.  
 PIETRUCCI, E. M., SN  
 SPRINGFIELD, MASS.  
 PIFFAT, A. J., FN  
 TRENTON, N. J.  
 PINKSTON, J. E., BT3  
 SALISBURY, N. C.  
 PITARD, C. H., SK3  
 MARLBORO, MASS.  
 PLOTH, G. F., SOGSN  
 ROOSEVELT, N. Y.  
 RALPH, R. L., SN  
 LOUISVILLE, KY.  
 RAY, G. A., YN3  
 FAYETTEVILLE, N. C.  
 REDMON, R. D., SN  
 VERSAILLES, KY.  
 REES, R. G., FN  
 KNOXVILLE, IOWA  
 REEVES, L. (N), TN  
 PHILADELPHIA, PA.  
 ROBINSON, J. H., GM3  
 EUTAW, ALA.  
 ROMANOWSKI, E. F., FA  
 GLOUCESTER, N. J.  
 RUBLE, F. L., GM3  
 PARKERSBURG, W. VA.  
 RUSSELL, B. J., CS3  
 NORFOLK, VA.  
 SAUNDERS, M. A., FT3  
 ST. LOUIS, MO.  
 SCHMITT, J. K., MMFN  
 TRENTON, NEB.  
 SCHNETZKA, H. A., GMSN  
 STEWARTSTOWN, PA.  
 SCHROCK, R. L., FN  
 HOOVERVILLE, PA.  
 SCHULDEN, P. H., SN  
 ELIZABETH, N. J.  
 SCHULTE, F. L., ENS.  
 FORT MADISON, IOWA  
 SCHUMACHER, J. H., BTFN  
 LONG ISLAND, N. Y.  
 SHAFFER, B. J., MM3  
 CHARLESTON, W. VA.  
 SHAMBLIN, C. J., HM1  
 NORWICH, CONN.  
 SHANNHOLTZ, R. L., RDSN  
 HAGERSTOWN, MD.  
 SHOOP, S. C., SOG3  
 SEATTLE, WASH.  
 SKRIPKO, M. V., SFP3  
 YONKERS, N. Y.  
 SIPIO, W. (N), SD3  
 BROOKLYN, N. Y.  
 SLAUGHTER, L., SN  
 CHICAGO, ILL.  
 SLOAN, G. W., SF1  
 DES MOINES, IOWA  
 SLOAN, W. T., BT1  
 WILMINGTON, N. C.  
 SMITH, G. H., SKSN  
 MYRTLE POINT, ORE.  
 SMITH, J. W., IC3  
 BEECHER CITY, ILL.  
 SMITH, W. A., FN  
 HUBBARD, OHIO  
 SNELLINGS, H. H., BM2  
 FALMOUTH, VA.  
 SPRAY, T. H., EMFN  
 MORRIS PLAINS, N. J.  
 SPRINGER, A. A., EMFN  
 BALTIMORE, MD.  
 STALLARD, H. E., BT3  
 COUNCIL BLUFFS, IOWA  
 STEELE, J. D., SN  
 BOSTON, MASS.  
 STONER, D. M., SN  
 MERCERSBURG, PA.  
 SUBDA, J. (N), SOG2  
 WILMINGTON, DELA.  
 SULLIVAN, J. S., GM  
 PINCKNEYVILLE, ILL.  
 SWEENEY, R. J., GM1  
 TRENTON, N. J.  
 TALUSKIE, J. S., LTJG.  
 PITTSBURGH, PA.  
 TAULMAN, T. L., SN  
 INDIANAPOLIS, IND.  
 TAYLOR, A. W., CS3  
 WILLIAMSTON, S. C.  
 THEISZ, G. F., JR., ENS  
 GLEN ARM, MD.  
 THOMPSON, H. L., FTSN  
 FARGO, N. D.  
 TINSLEY, O. (N), SN  
 SHELBYVILLE, KY.  
 TOLEMAN, R. L., IC3  
 PORTSMOUTH, OHIO  
 TUCKER, R. L., MM1  
 PORTSMOUTH, VA.  
 TUTTLE, R. D., RD2  
 MOUNT VERNON, N. Y.  
 UBIL, L. C., SN  
 PHILADELPHIA, PA.  
 VANDERHOOF, F. H., FN  
 MAUSTON, WIS.  
 VANEK, R. A., SN  
 ORLAND PARK, ILL.  
 VAUGHN, R. W., BTFN  
 ARLEY, ALA.  
 WALTER, T. R., TN  
 HOUSTON, TEXAS  
 WEAVER, R. H., GM2  
 REDFORD, VA.  
 WHATLEY, "D", "W", EMC  
 PORTSMOUTH, VA.  
 WILLIAMS, A. L., BT2  
 JACKSONVILLE, FLA.  
 WILLIAMS, E. D., SN  
 NEW CUMBERLAND, W. VA.  
 WILSON, D., BM3  
 ALBANY, GA.  
 WOLF, L. A., EM2  
 LAFAYETTE, IND.  
 WOMACK, B. R., SN  
 GRACEMONT, OKLA.  
 WONDERS, R. J., SN  
 MINGO JUNCTION, OHIO  
 WOODS, R. P., SK3  
 SYRACUSE, N. Y.  
 ZEIDERS, D. E., JR., SN  
 YORK, PA.  
 ZINK, R. R., SN  
 BLOOMINGTON, IND.  
 ZOLL, R. E., BMSN  
 NORFOLK, VA.  
 ZYTKO, J. J., YN3  
 GARY, IND.





**EDITOR**

**ENS. R.R. HAWTHORNE**

**ASST. EDITOR**

**C.E. CALETTI**

**LAYOUT EDITOR**

**R.L. ELSBERRY, MM3**

**EDITORIAL STAFF R.L. BRAMBLETT, SOSN**

**CARTOON & SKETCHES J. SUBDA SO2**

**PHOTOGRAPHER W.S. BLACKSTOCK, SM1**

We especially want to thank the men who supplied us with personal photographs, without them, this book would not have been a success.

It was our intention to give the officers and men of our ship the best cruise book ever for LAFHEY.

• It is our hope that you feel we have accomplished our mission, and reached our goal.

